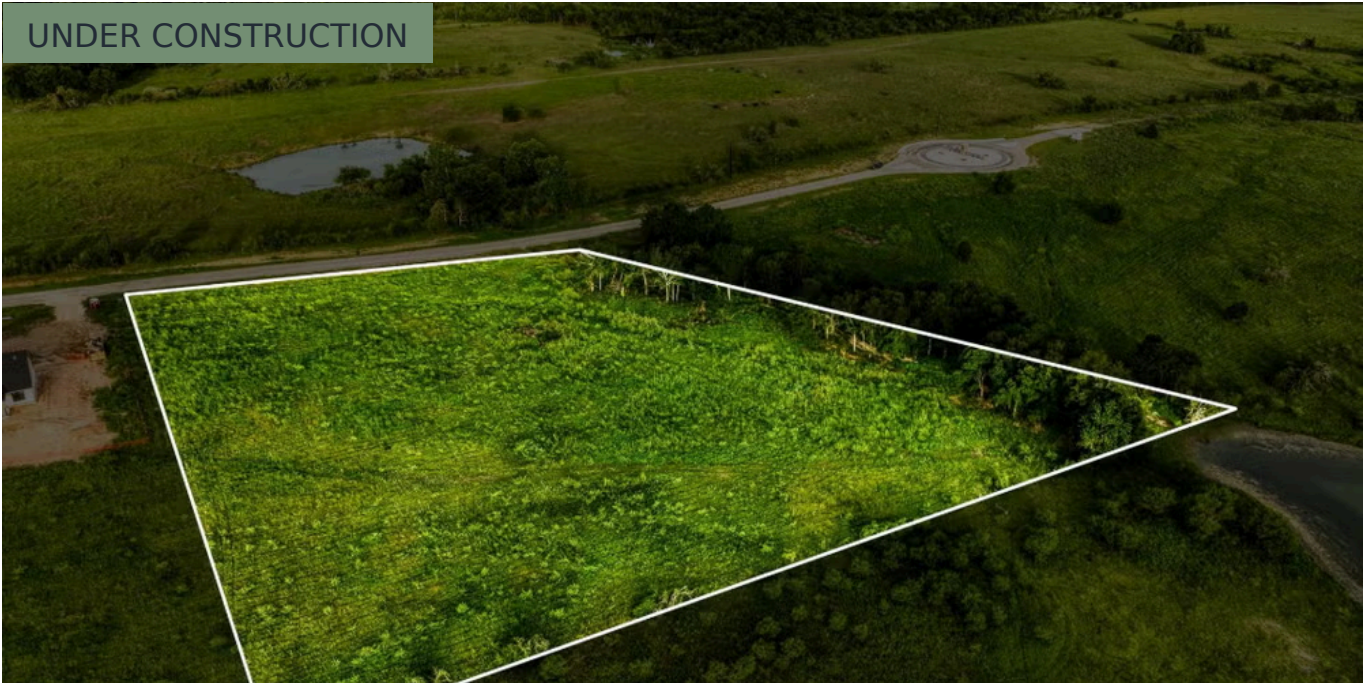


UNDER CONSTRUCTION



Lot 9 Hargrove Lane Washington, TX 77880

This 4.4-acre lot is the perfect spot for your future home. Nestled in the stunning Hill Creek Ridge community, this property affords breathtaking views of the Washington County countryside. The location is just a short distance between Historic Chappell Hill and Washington on the Brazos, the birthplace of Texas. In less than ten minutes you can enjoy a glass of wine at Chapelton Vineyards, visit the state park and go on a hike along the Brazos, or go shopping in Chappell Hill and enjoy lunch at Bevers Kitchen or Grapevine. You are less than 20 minutes to Brenham, 50 minutes to College Station, and just over an hour to Houston from Hill Creek Ridge. The location cannot be beat - the best of country living with quick access to modern amenities.

Home Priced At
\$328,000

Plan:

All square footage is approximate. Renderings are artist's conceptions and may vary slightly from the actual home. Homes may be built in reverse of plans shown, depending on site conditions. Minor architectural changes may be made occasionally at the option of the builder. Please contact your Sales Consultant for details.