



Single Family


Plan 2434

Mustang Meadows 40's

Plan 2434 is the flagship of the 40' series, offering the most space and the strongest sense of luxury. A large upstairs game room anchors the second floor, while generous bedroom sizes throughout the home support long-term living. The open-to-below feature enhances the home's scale, and the layout works well for buyers who want space without moving to a wider lot. Located just minutes from schools, shopping, and dining, Mustang Meadows is the perfect place to make lasting memories. For more details or to express interest, contact us today!

Priced From
\$349,900

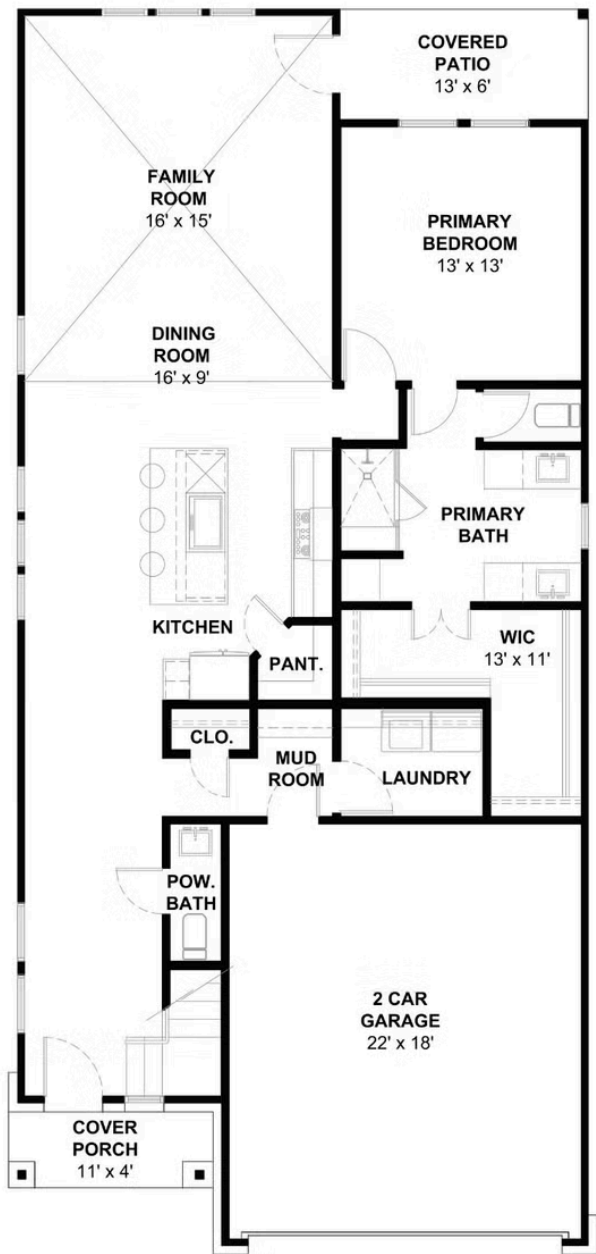
1 Elevation Available

-  **4** Bedrooms
-  **3.5** Bathrooms
-  **2,434+** Sq. Ft.
-  **2** Car Garage

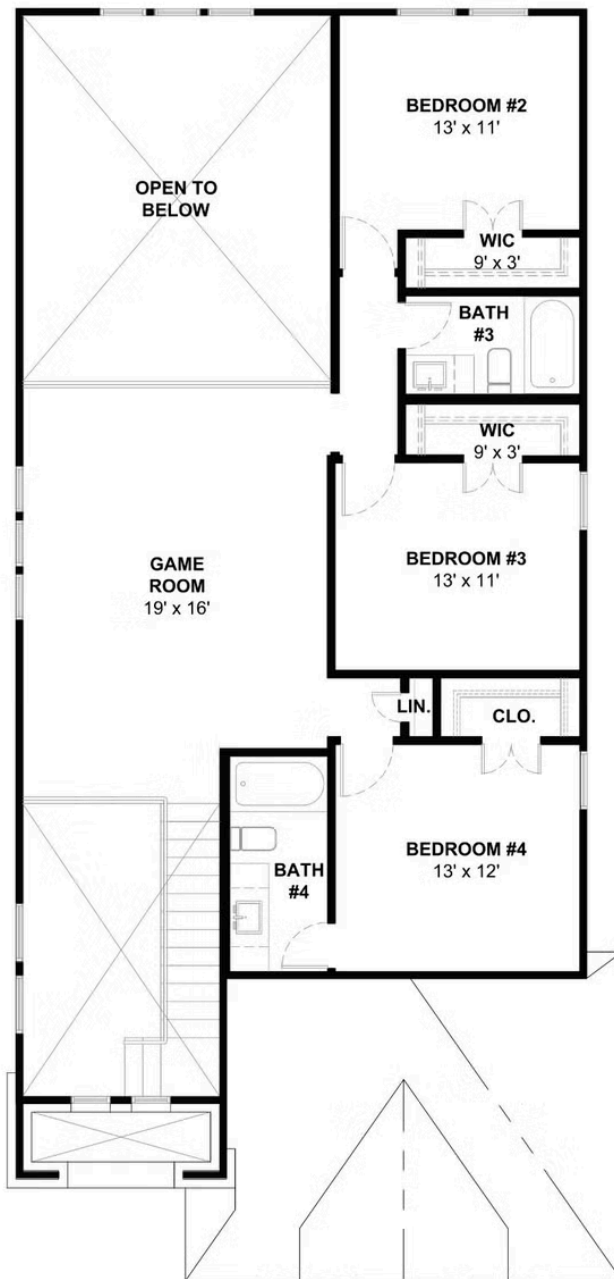


All square footage is approximate. Renderings are artist's conceptions and may vary slightly from the actual home. Homes may be built in reverse of plans shown, depending on site conditions. Minor architectural changes may be made occasionally at the option of the builder. Please contact your Sales Consultant for details.

Elevation 2434 A



FIRST LEVEL FLOOR PLAN



SECOND LEVEL FLOOR PLAN

All square footage is approximate. Renderings are artist's conceptions and may vary slightly from the actual home. Homes may be built in reverse of plans shown, depending on site conditions. Minor architectural changes may be made occasionally at the option of the builder. Please contact your Sales Consultant for details.