



Single Family


Plan 2225

Mustang Meadows 40's

Plan 2225 stands out visually with its open-to-below feature, creating dramatic ceiling height and natural light in the main living area. The upstairs game room overlooks the space below, enhancing connection while maintaining separation. The primary suite remains downstairs for convenience, while secondary bedrooms are upstairs. Located just minutes from schools, shopping, and dining, Mustang Meadows is the perfect place to make lasting memories. For more details or to express interest, contact us today!

Priced From
\$344,900

1 Elevation Available

 **4** Bedrooms

 **3.5** Bathrooms

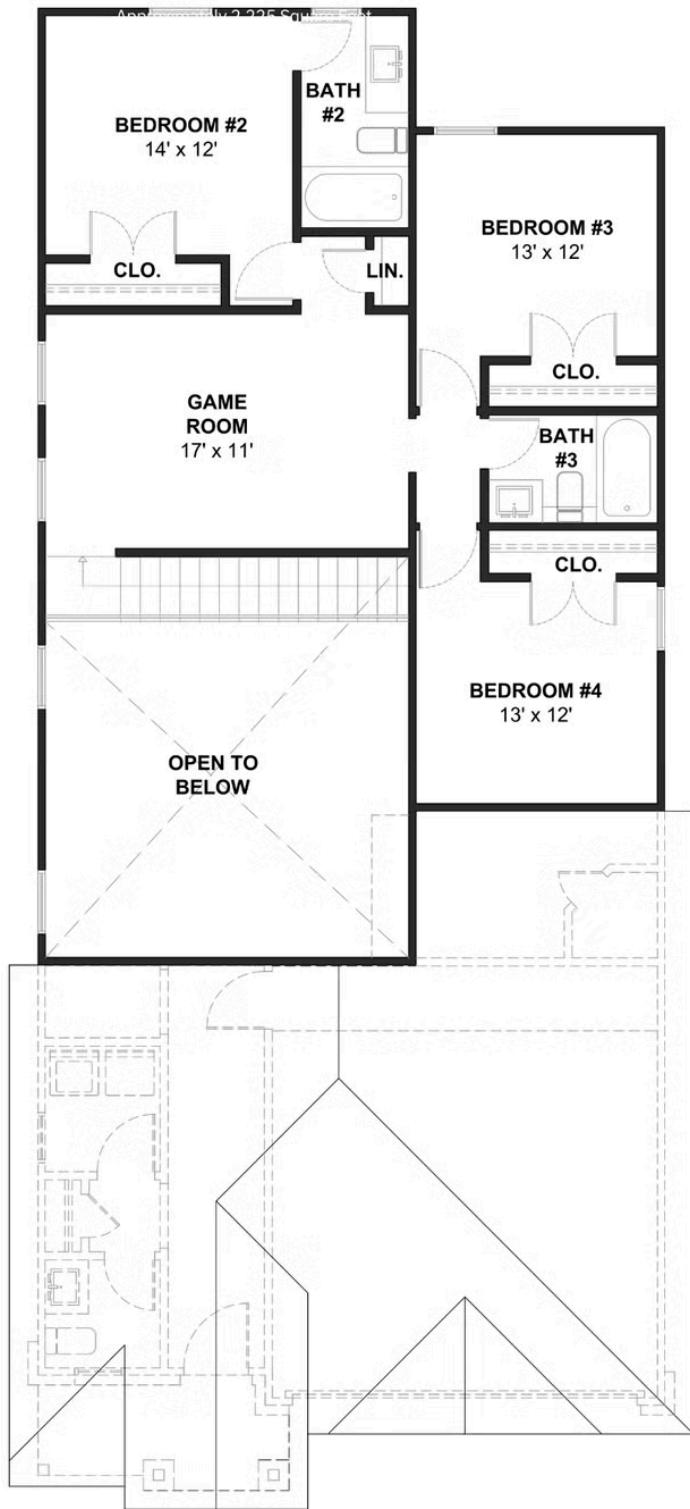
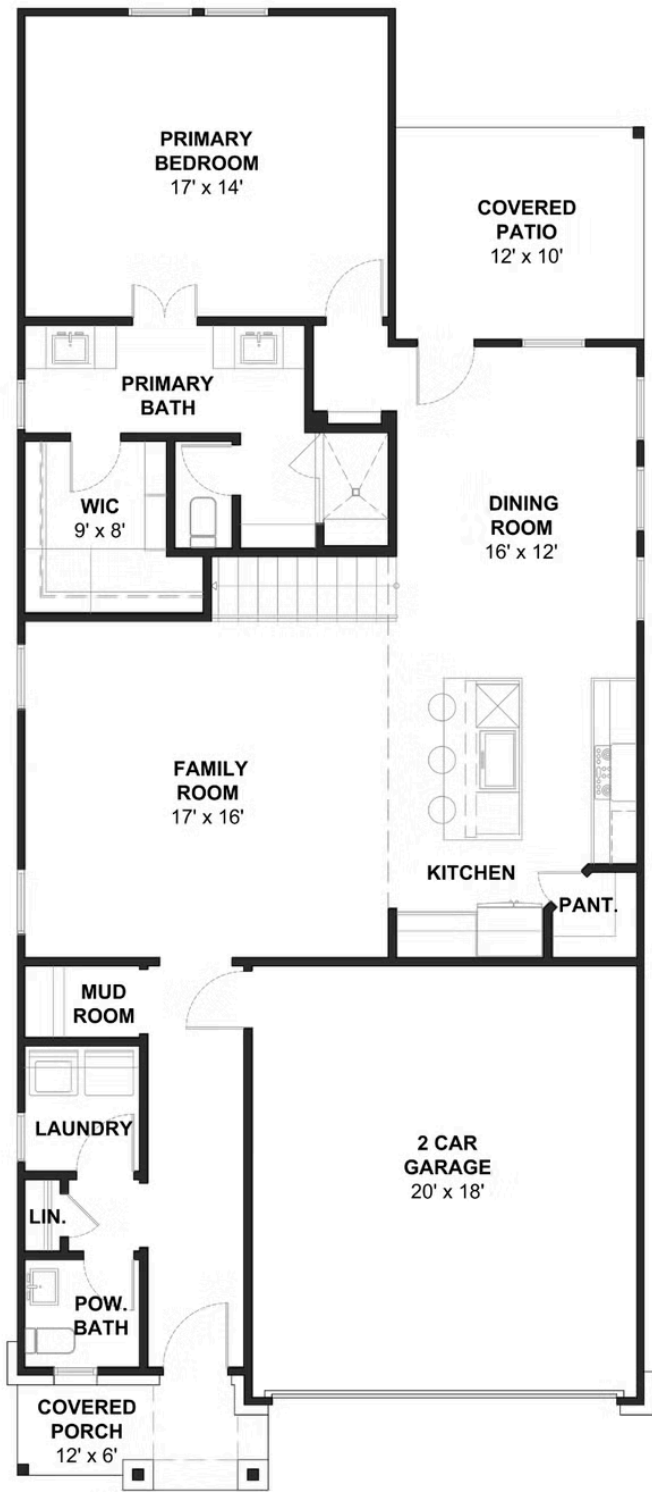
 **2,225+** Sq. Ft.

 **2** Car Garage



All square footage is approximate. Renderings are artist's conceptions and may vary slightly from the actual home. Homes may be built in reverse of plans shown, depending on site conditions. Minor architectural changes may be made occasionally at the option of the builder. Please contact your Sales Consultant for details.

Elevation A



All square footage is approximate. Renderings are artist's conceptions and may vary slightly from the actual home. Homes may be built in reverse of plans shown, depending on site conditions. Minor architectural changes may be made occasionally at the option of the builder. Please contact your Sales Consultant for details.