



Single Family


## Plan 2213

### Mustang Meadows 40's

Plan 2213 introduces a true two-story living experience with family spaces on both levels. The main floor offers an open kitchen, dining, and family room ideal for daily living, while the second floor provides an additional family room that separates adult and kid spaces. The primary suite is upstairs, creating a private retreat away from main-level activity. Located just minutes from schools, shopping, and dining, Mustang Meadows is the perfect place to make lasting memories. For more details or to express interest, contact us today!

Priced From  
**\$344,900**

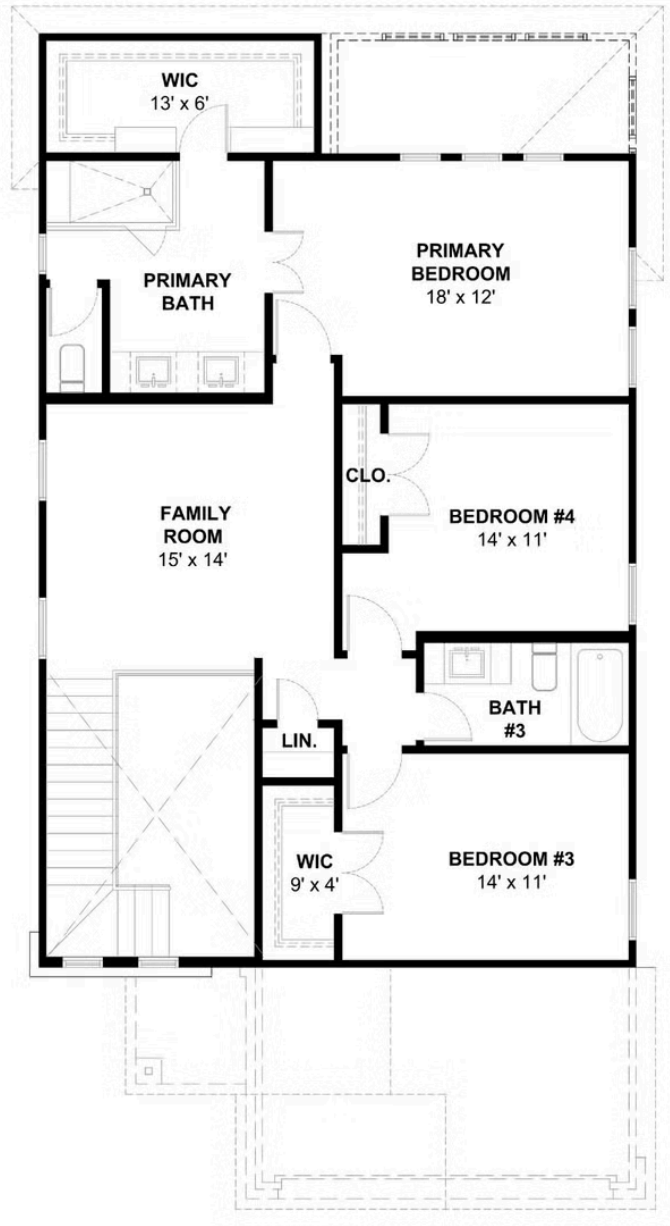
#### 1 Elevation Available

-  **4** Bedrooms
-  **3.5** Bathrooms
-  **2,213+** Sq. Ft.
-  **2** Car Garage



All square footage is approximate. Renderings are artist's conceptions and may vary slightly from the actual home. Homes may be built in reverse of plans shown, depending on site conditions. Minor architectural changes may be made occasionally at the option of the builder. Please contact your Sales Consultant for details.

## Elevation 2213 A



All square footage is approximate. Renderings are artist's conceptions and may vary slightly from the actual home. Homes may be built in reverse of plans shown, depending on site conditions. Minor architectural changes may be made occasionally at the option of the builder. Please contact your Sales Consultant for details.