



Single Family

Plan 1997

Mustang Meadows 40's

Plan 1997 is ideal for buyers who value lifestyle space over bedroom count. The upstairs game room provides a dedicated entertainment zone—perfect for movie nights, kids’ activities, or hobbies—while the main floor remains focused on everyday living. The primary suite is downstairs, offering privacy and convenience. Multiple bathrooms ensure comfort for both residents and guests. Located just minutes from schools, shopping, and dining, Mustang Meadows is the perfect place to make lasting memories. For more details or to express interest, contact us today!

Priced From
\$334,900

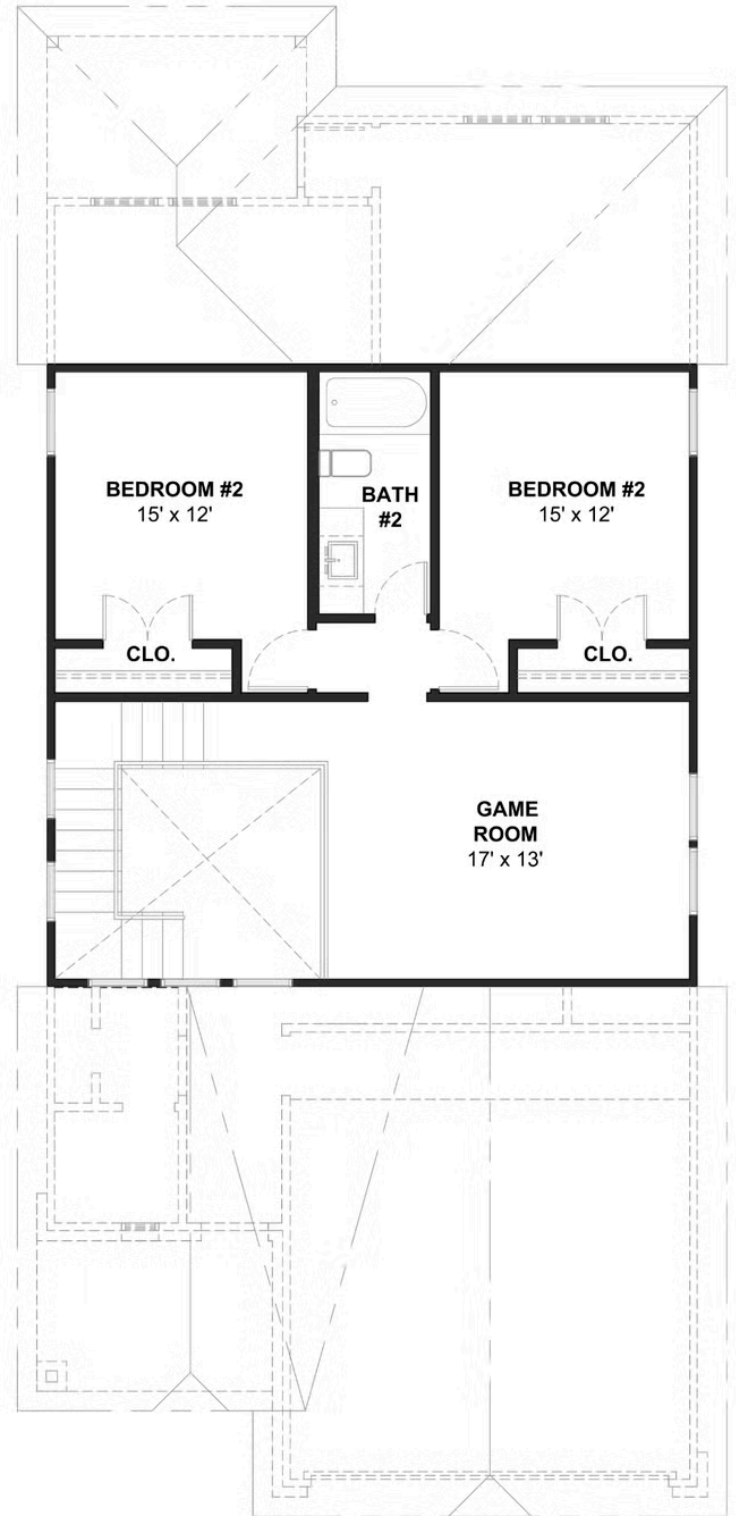
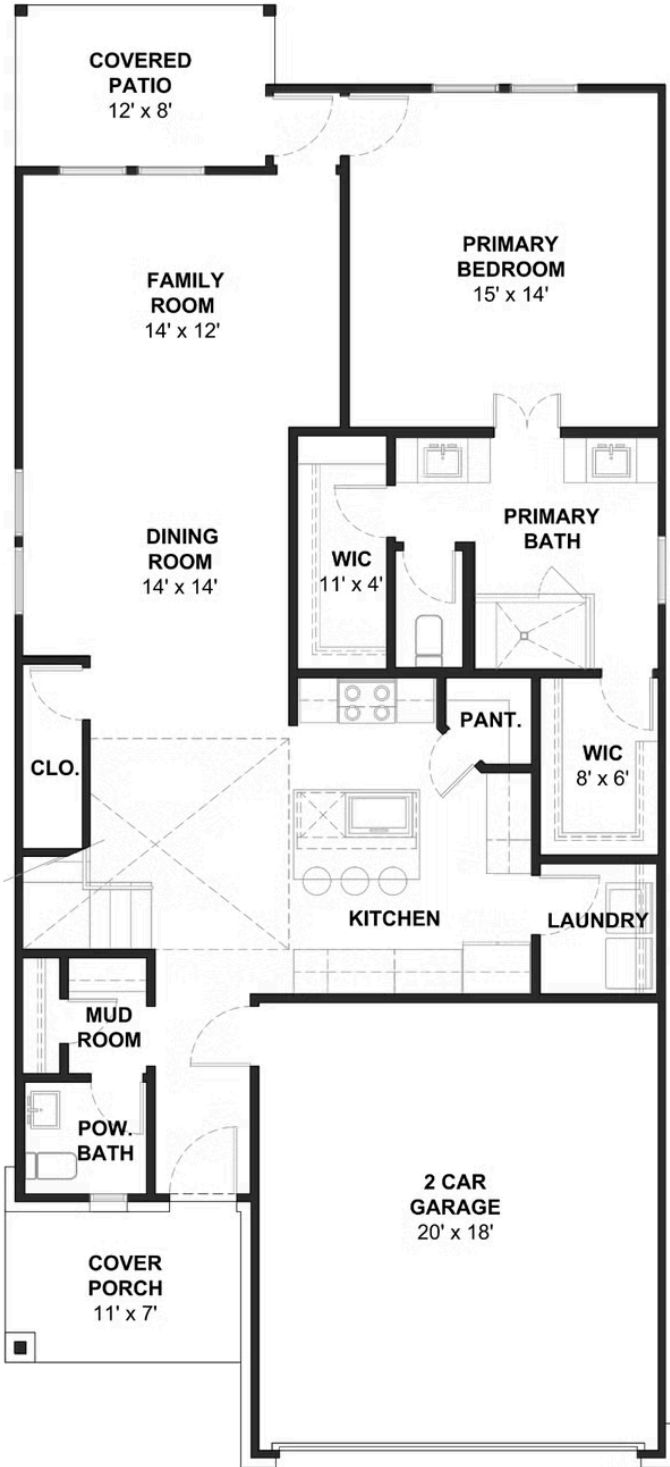
1 Elevation Available

-  **3** Bedrooms
-  **2.5** Bathrooms
-  **1,997+** Sq. Ft.
-  **2** Car Garage



All square footage is approximate. Renderings are artist’s conceptions and may vary slightly from the actual home. Homes may be built in reverse of plans shown, depending on site conditions. Minor architectural changes may be made occasionally at the option of the builder. Please contact your Sales Consultant for details.

Elevation A



All square footage is approximate. Renderings are artist's conceptions and may vary slightly from the actual home. Homes may be built in reverse of plans shown, depending on site conditions. Minor architectural changes may be made occasionally at the option of the builder. Please contact your Sales Consultant for details.