



Single Family


Plan 1997

Mustang Meadows

A new home is on the way in Mustang Meadows, Waller, TX! This thoughtfully designed home offers a functional layout with modern conveniences, providing comfortable living in a family-friendly community. Located just minutes from schools, shopping, and dining, Mustang Meadows is the perfect place to make lasting memories. For more details or to express interest, contact us today!

Priced From
\$329,900

2 Elevations Available

 **3** Bedrooms

 **2.5** Bathrooms

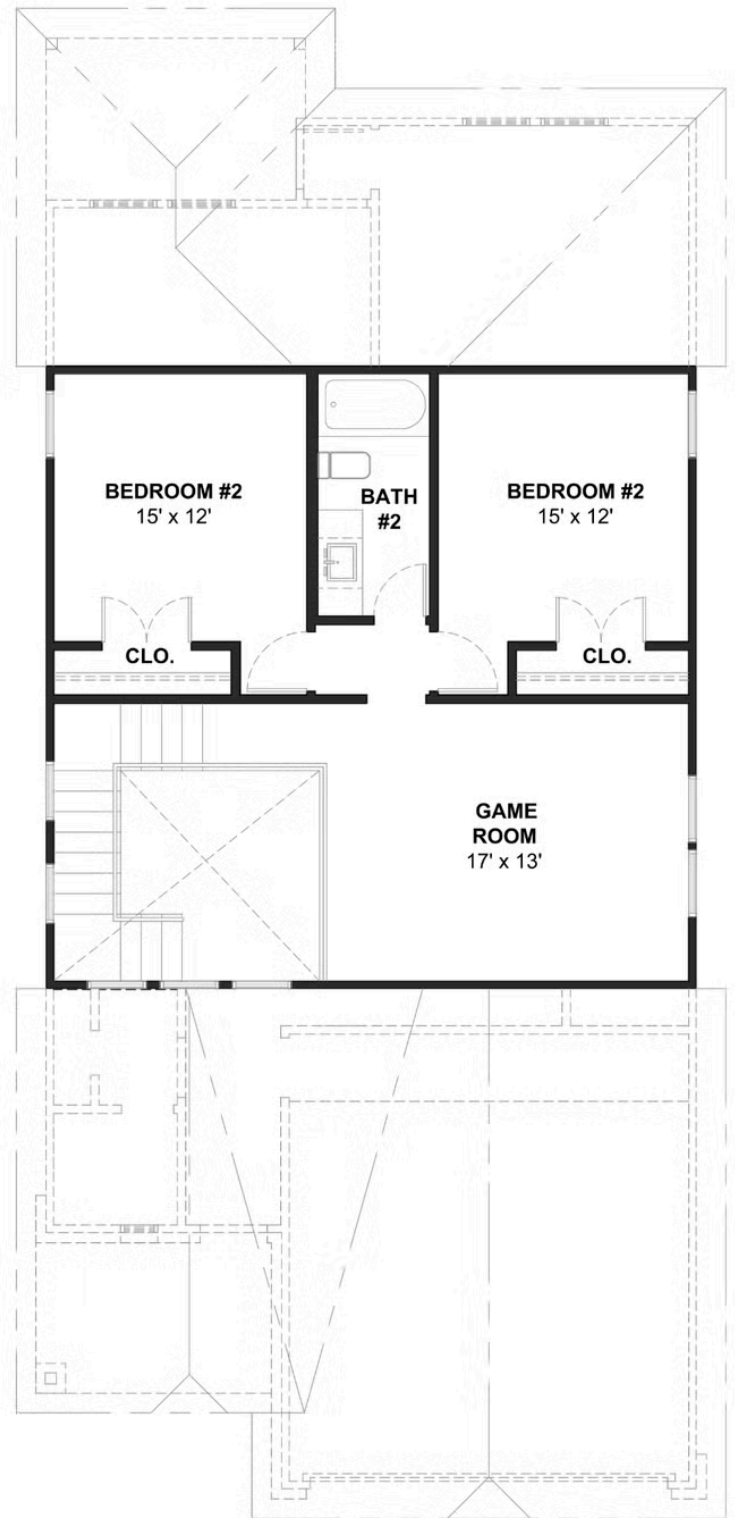
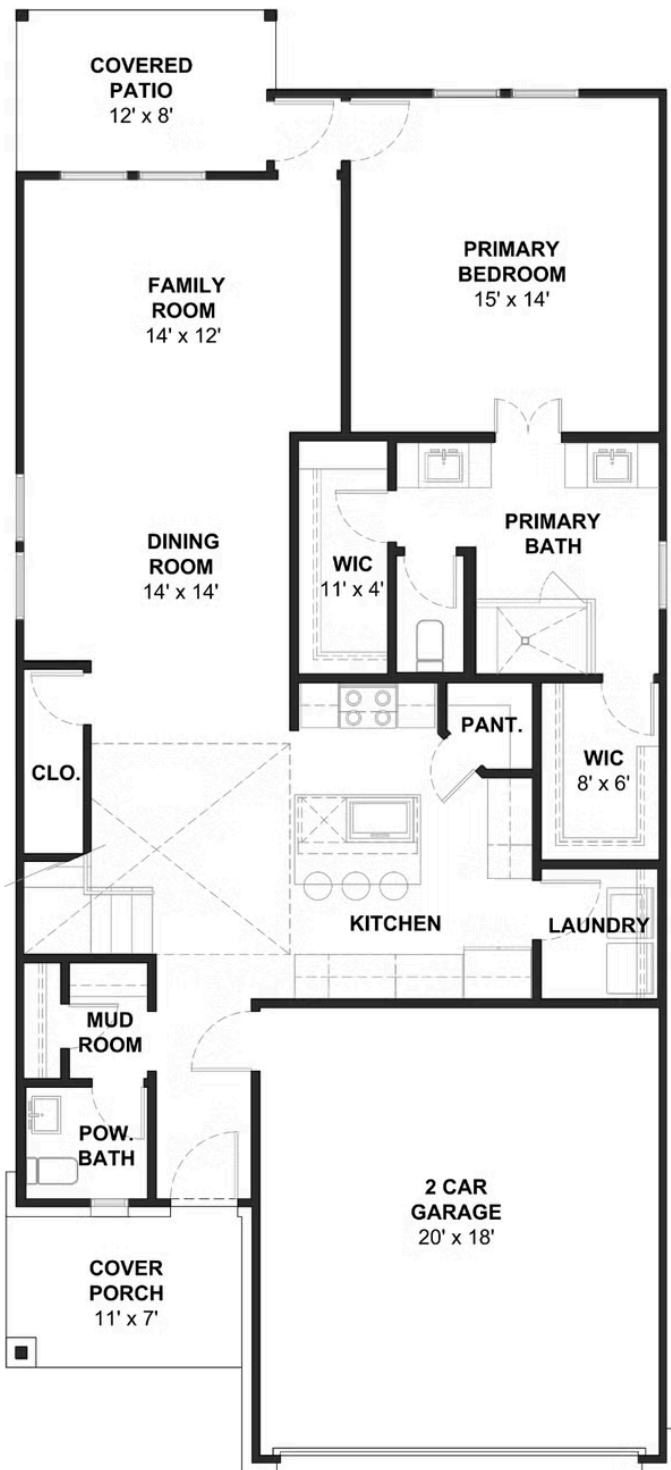
 **1,997+** Sq. Ft.

 **2** Car Garage

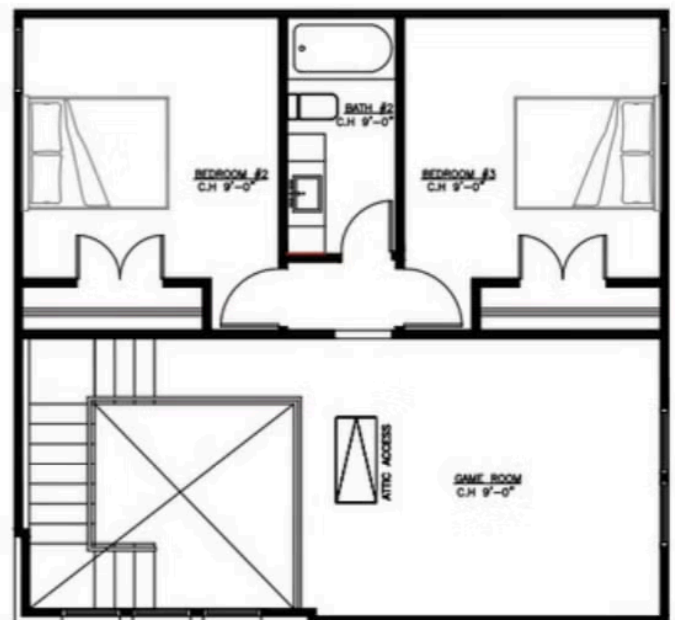
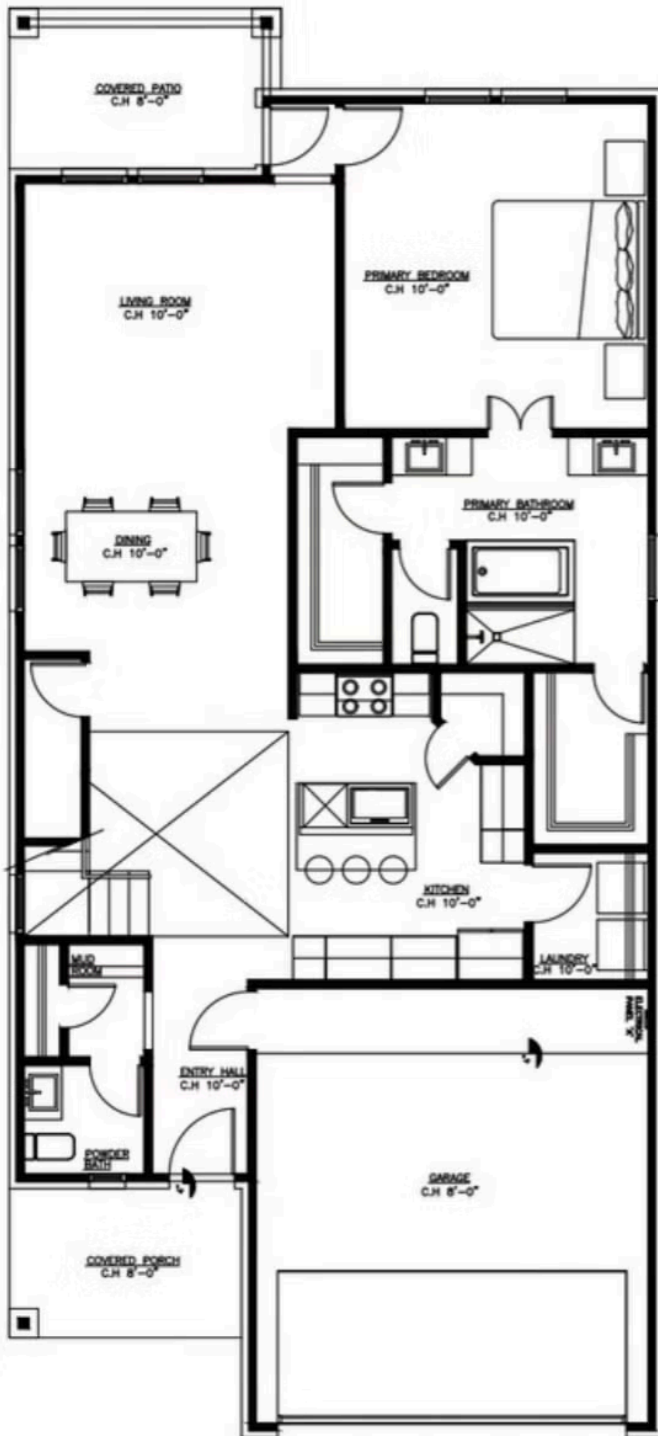


All square footage is approximate. Renderings are artist's conceptions and may vary slightly from the actual home. Homes may be built in reverse of plans shown, depending on site conditions. Minor architectural changes may be made occasionally at the option of the builder. Please contact your Sales Consultant for details.

Elevation A



All square footage is approximate. Renderings are artist's conceptions and may vary slightly from the actual home. Homes may be built in reverse of plans shown, depending on site conditions. Minor architectural changes may be made occasionally at the option of the builder. Please contact your Sales Consultant for details.



All square footage is approximate. Renderings are artist's conceptions and may vary slightly from the actual home. Homes may be built in reverse of plans shown, depending on site conditions. Minor architectural changes may be made occasionally at the option of the builder. Please contact your Sales Consultant for details.