



Single Family

Plan 1835

Mustang Meadows 40's

Plan 1835 offers a smart blend of bedroom count and shared living space. All four bedrooms are well-proportioned, and the layout keeps the home feeling organized rather than crowded. The centrally located kitchen overlooks the dining and family rooms, making it easy to stay connected during daily routines. A covered patio extends the living space outdoors. Located just minutes from schools, shopping, and dining, Mustang Meadows is the perfect place to make lasting memories. For more details or to express interest, contact us today!

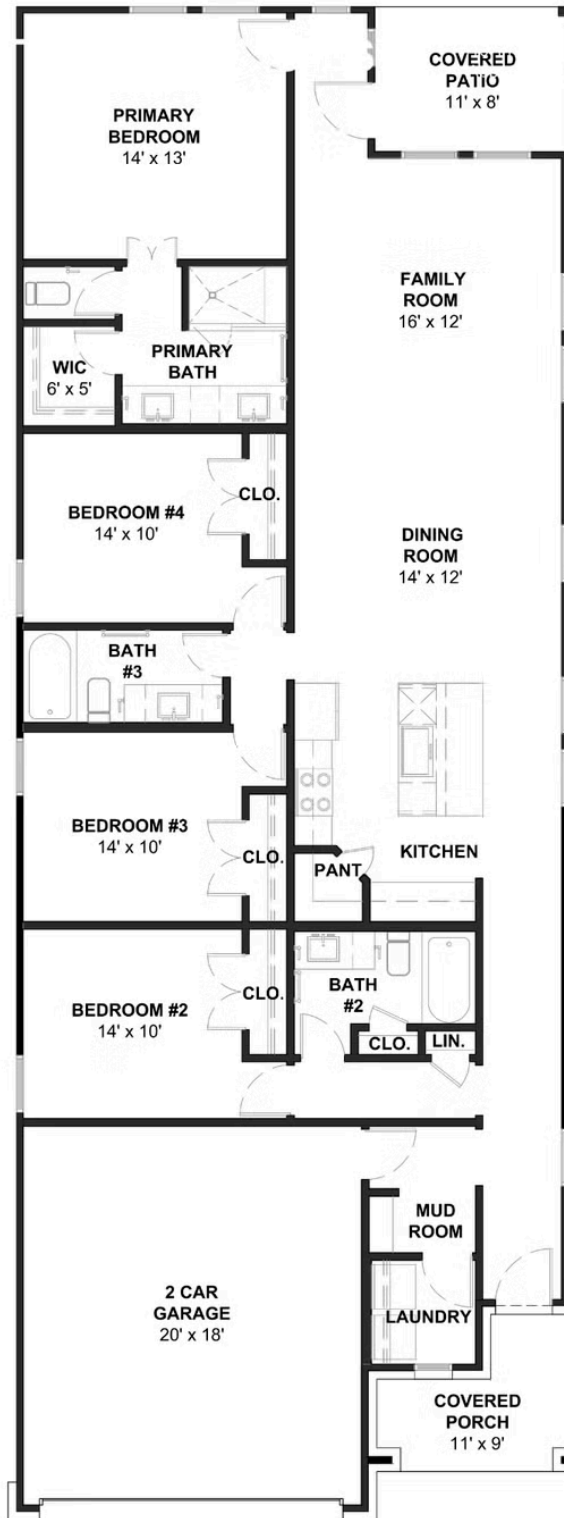
Priced From
\$319,900

1 Elevation Available

-  **4** Bedrooms
-  **3** Bathrooms
-  **1,837+** Sq. Ft.
-  **2** Car Garage



All square footage is approximate. Renderings are artist's conceptions and may vary slightly from the actual home. Homes may be built in reverse of plans shown, depending on site conditions. Minor architectural changes may be made occasionally at the option of the builder. Please contact your Sales Consultant for details.



Elevation A

All square footage is approximate. Renderings are artist's conceptions and may vary slightly from the actual home. Homes may be built in reverse of plans shown, depending on site conditions. Minor architectural changes may be made occasionally at the option of the builder. Please contact your Sales Consultant for details.