



Single Family


Plan 3255

Mustang Meadows 50's

Plan 3255 is the largest and most versatile home in the 50' series. With five bedrooms, a dedicated office, and a large game room, this plan is built for big families, multigenerational living, or buyers who simply want space to grow. The layout offers flexibility for long-term needs while still maintaining strong separation between living, working, and entertaining spaces. Located just minutes from schools, shopping, and dining, Mustang Meadows is the perfect place to make lasting memories. For more details or to express interest, contact us today!

Priced From
\$464,900

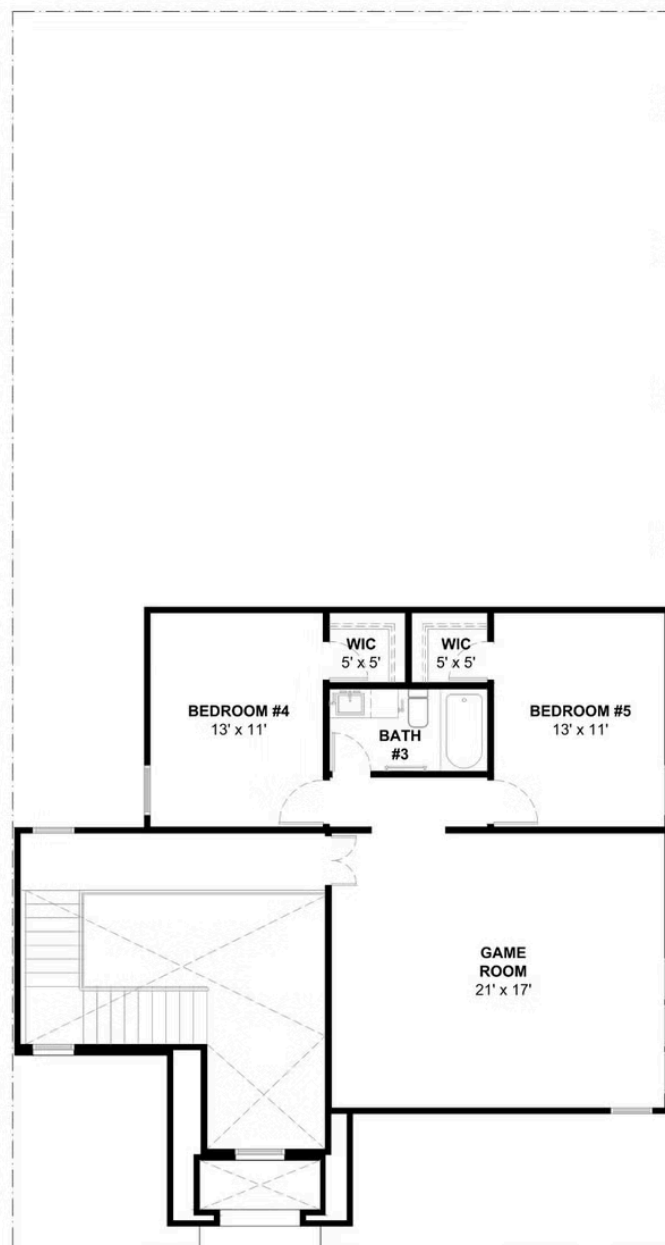
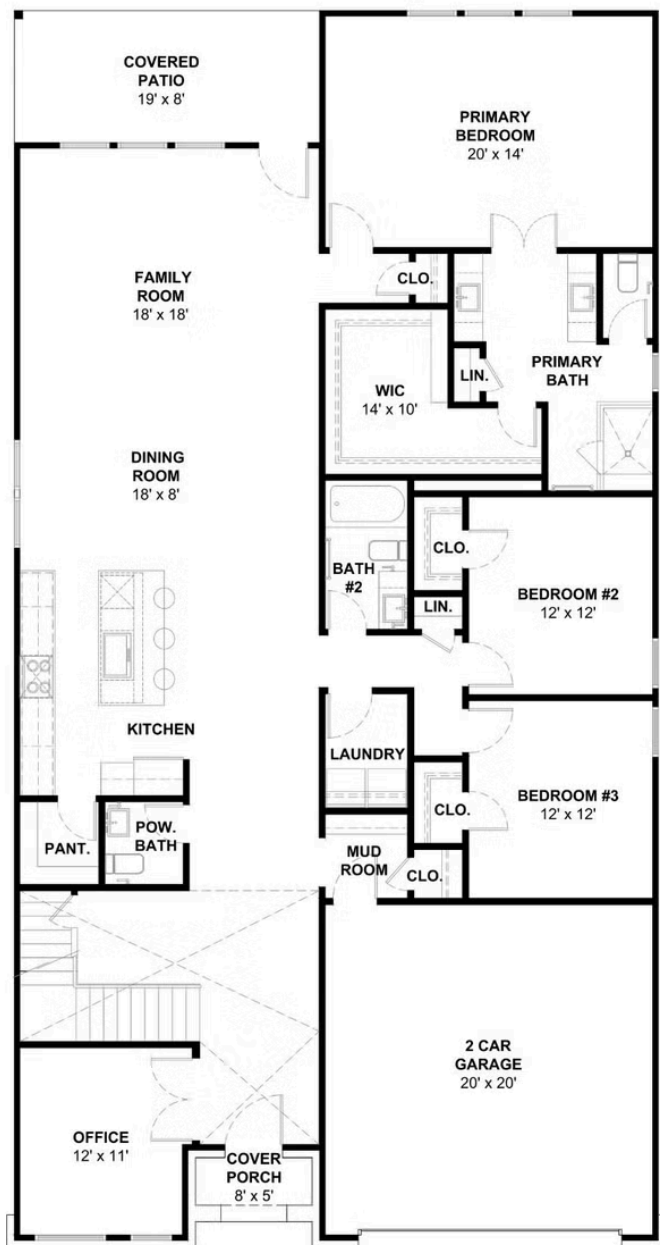
1 Elevation Available

-  **5** Bedrooms
-  **3.5** Bathrooms
-  **3,255+** Sq. Ft.
-  **2** Car Garage



All square footage is approximate. Renderings are artist's conceptions and may vary slightly from the actual home. Homes may be built in reverse of plans shown, depending on site conditions. Minor architectural changes may be made occasionally at the option of the builder. Please contact your Sales Consultant for details.

Elevation 3255 A



All square footage is approximate. Renderings are artist's conceptions and may vary slightly from the actual home. Homes may be built in reverse of plans shown, depending on site conditions. Minor architectural changes may be made occasionally at the option of the builder. Please contact your Sales Consultant for details.