



Single Family

Plan 2645

Mustang Meadows 50's

Plan 2645 elevates the experience with an open-to-below feature that adds natural light and architectural interest. The game room overlooks the main living area, creating visual connection while maintaining separation. A first-floor primary suite and office make this plan both functional and impressive.

Priced From
\$399,900

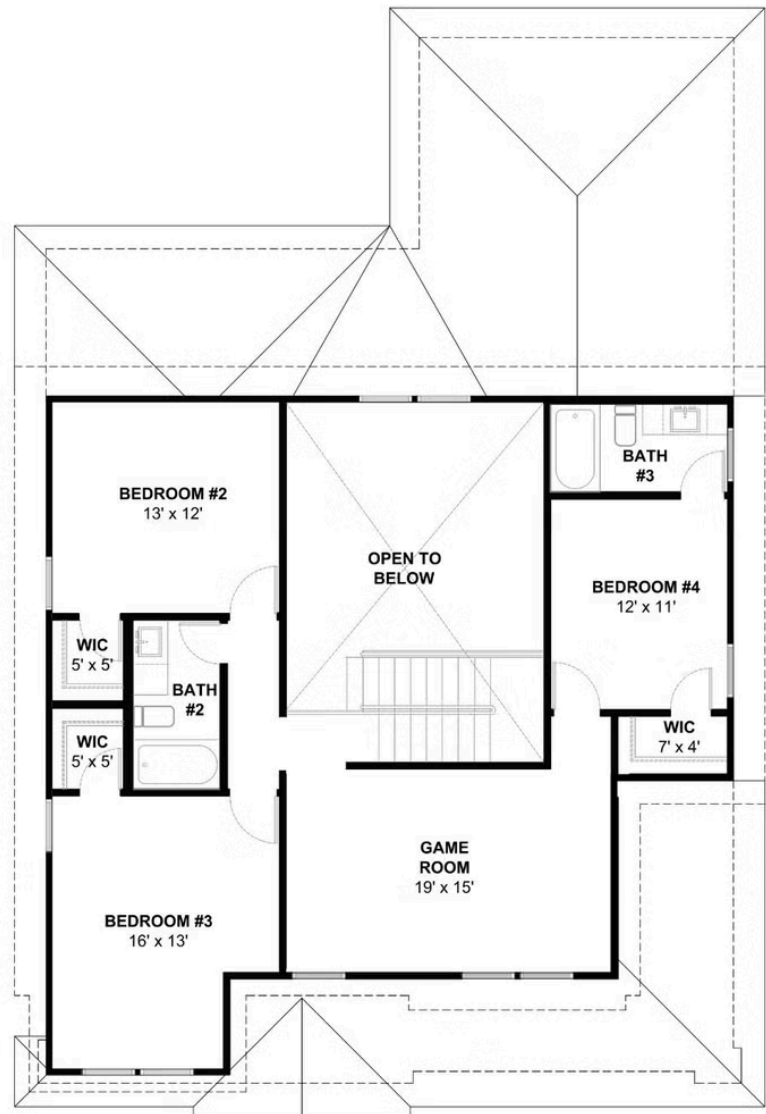
1 Elevation Available

-  **4** Bedrooms
-  **3.5** Bathrooms
-  **2,645+** Sq. Ft.
-  **2** Car Garage



All square footage is approximate. Renderings are artist's conceptions and may vary slightly from the actual home. Homes may be built in reverse of plans shown, depending on site conditions. Minor architectural changes may be made occasionally at the option of the builder. Please contact your Sales Consultant for details.

Elevation 2645 A



All square footage is approximate. Renderings are artist's conceptions and may vary slightly from the actual home. Homes may be built in reverse of plans shown, depending on site conditions. Minor architectural changes may be made occasionally at the option of the builder. Please contact your Sales Consultant for details.