



Single Family


## Plan 2545

### Mustang Meadows 50's

Plan 2545 introduces a true separation of spaces with a second-floor game room. The primary suite and office are located on the main level, while the upstairs is dedicated to entertainment and secondary bedrooms. This layout is perfect for families who want adult spaces downstairs and kid zones upstairs. Located just minutes from schools, shopping, and dining, Mustang Meadows is the perfect place to make lasting memories. For more details or to express interest, contact us today!

Priced From  
**\$394,900**

#### 1 Elevation Available

 **4** Bedrooms

 **3.5** Bathrooms

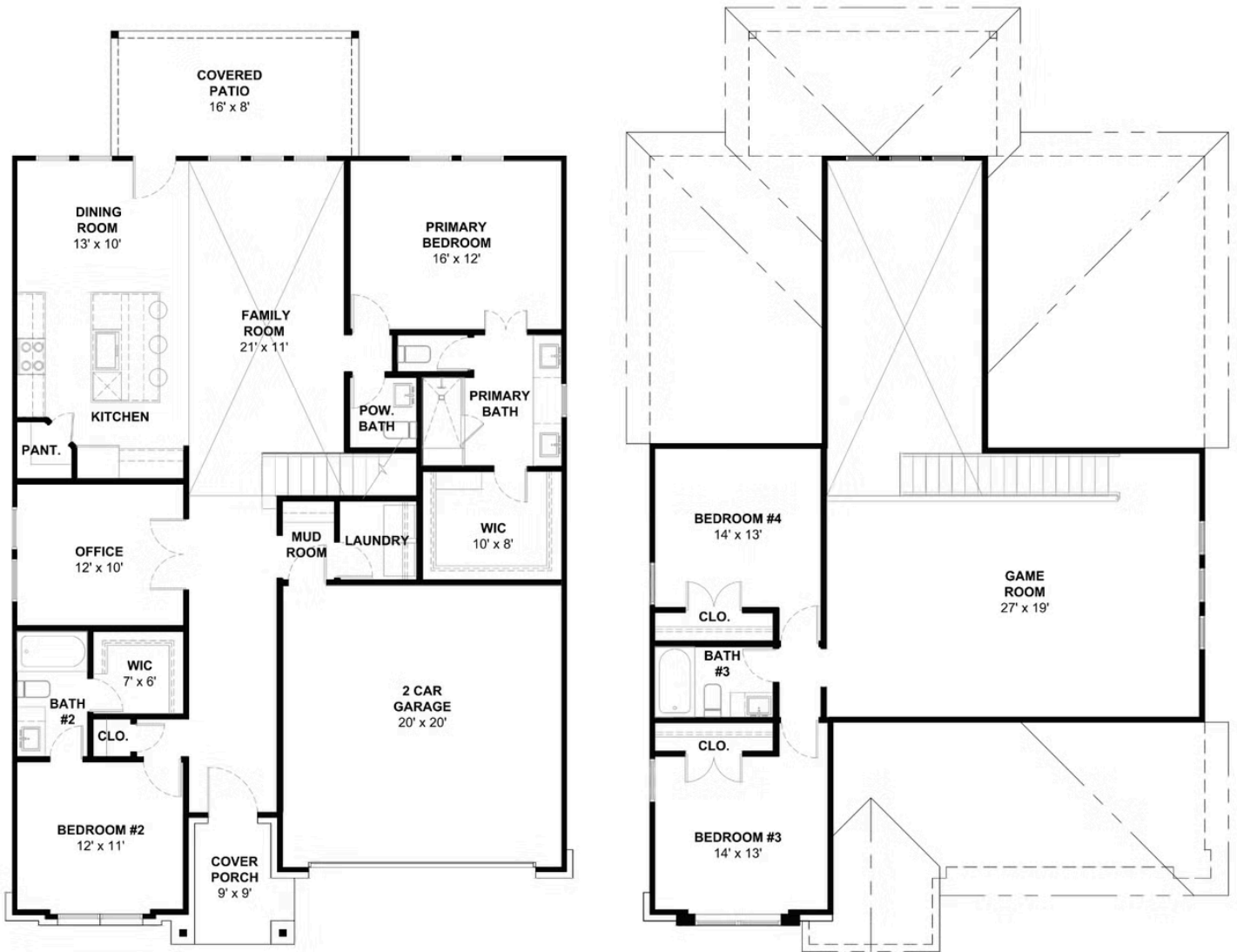
 **2,545+** Sq. Ft.

 **2** Car Garage



All square footage is approximate. Renderings are artist's conceptions and may vary slightly from the actual home. Homes may be built in reverse of plans shown, depending on site conditions. Minor architectural changes may be made occasionally at the option of the builder. Please contact your Sales Consultant for details.

Elevation A



All square footage is approximate. Renderings are artist's conceptions and may vary slightly from the actual home. Homes may be built in reverse of plans shown, depending on site conditions. Minor architectural changes may be made occasionally at the option of the builder. Please contact your Sales Consultant for details.