



Single Family

## Plan 2300

### Mustang Meadows 50's

Plan 2300 blends family space and productivity. The dedicated office is ideal for work-from-home needs, while four bedrooms provide flexibility for guests, kids, or extended family. The kitchen sits at the center of the home, overlooking both the dining and family rooms, making this plan ideal for everyday life and entertaining.

Priced From  
**\$374,900**

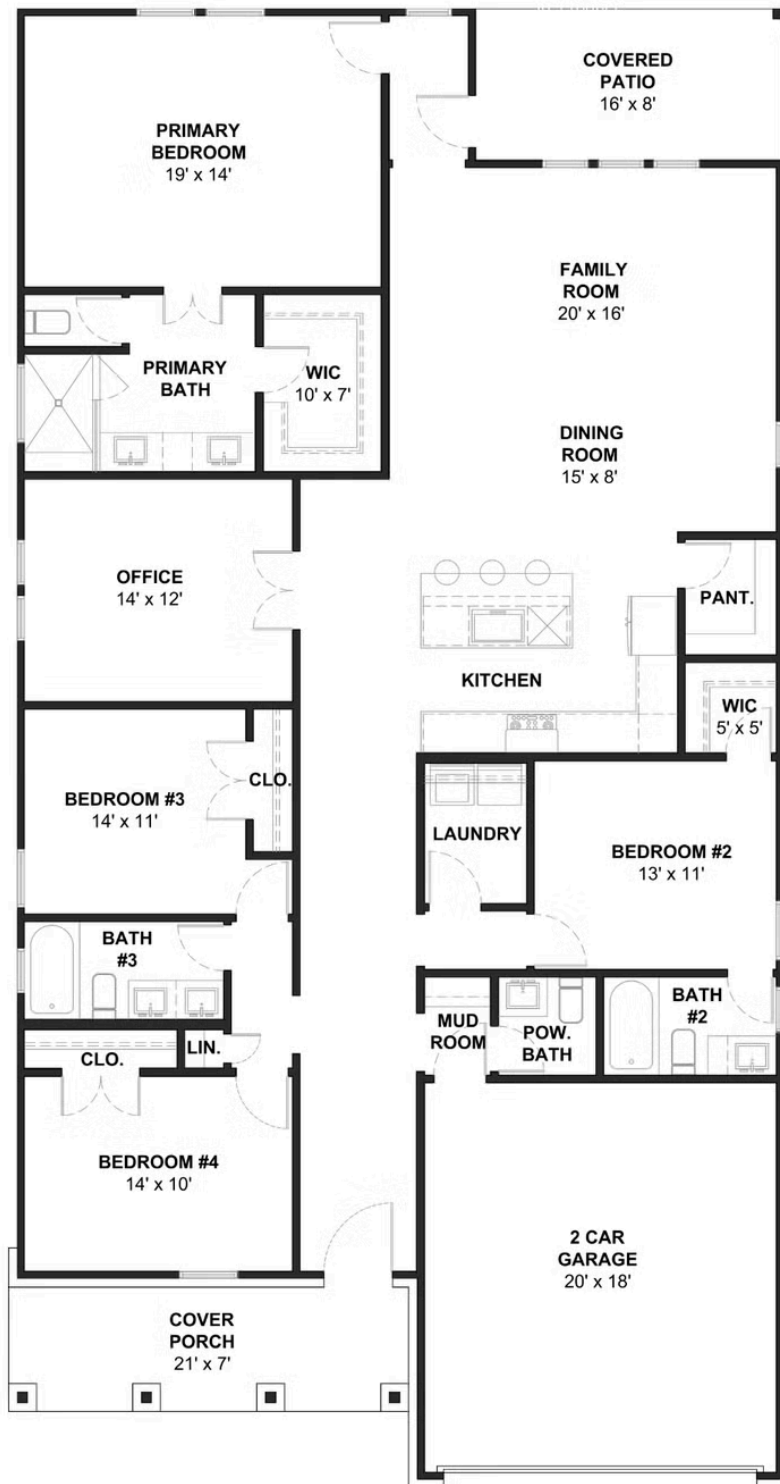
#### 1 Elevation Available

-  **4** Bedrooms
-  **3.5** Bathrooms
-  **2,300+** Sq. Ft.
-  **2** Car Garage



All square footage is approximate. Renderings are artist's conceptions and may vary slightly from the actual home. Homes may be built in reverse of plans shown, depending on site conditions. Minor architectural changes may be made occasionally at the option of the builder. Please contact your Sales Consultant for details.

Elevation A



All square footage is approximate. Renderings are artist's conceptions and may vary slightly from the actual home. Homes may be built in reverse of plans shown, depending on site conditions. Minor architectural changes may be made occasionally at the option of the builder. Please contact your Sales Consultant for details.