



Single Family

## Plan 2290

### Mustang Meadows 50's

Plan 2290 is a standout for buyers who want four bedrooms but prefer single-story living. With multiple bathrooms—including a powder bath—this plan is well suited for larger households or multigenerational living. The open kitchen and family room anchor the home, while the bedrooms are thoughtfully separated to maintain privacy.

Priced From  
**\$374,900**

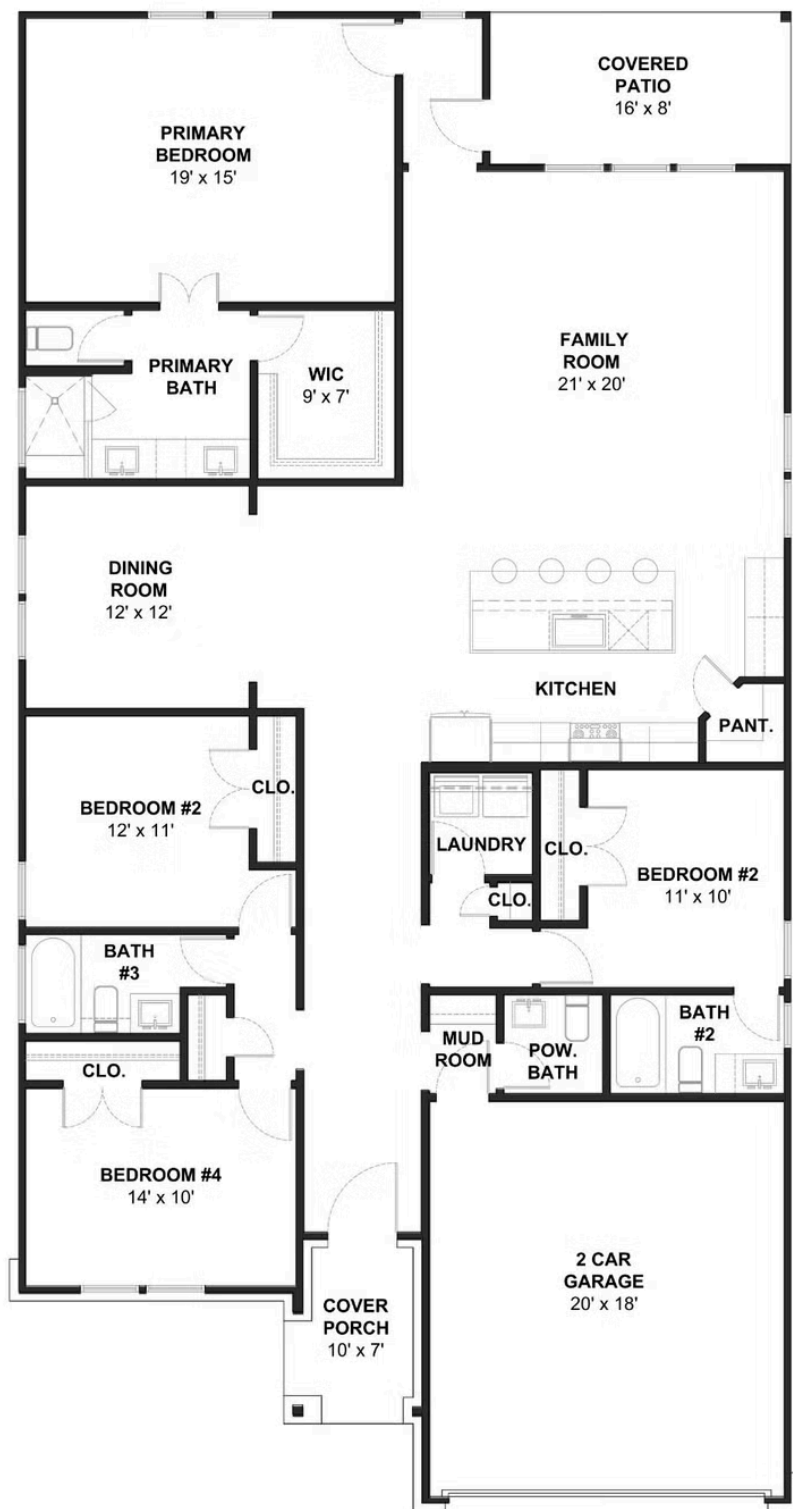
#### 1 Elevation Available

-  **4** Bedrooms
-  **3.5** Bathrooms
-  **2,290+** Sq. Ft.
-  **2** Car Garage



All square footage is approximate. Renderings are artist's conceptions and may vary slightly from the actual home. Homes may be built in reverse of plans shown, depending on site conditions. Minor architectural changes may be made occasionally at the option of the builder. Please contact your Sales Consultant for details.

## Elevation 2290 A



All square footage is approximate. Renderings are artist's conceptions and may vary slightly from the actual home. Homes may be built in reverse of plans shown, depending on site conditions. Minor architectural changes may be made occasionally at the option of the builder. Please contact your Sales Consultant for details.