



Single Family

Plan 2085

Mustang Meadows 50's

Plan 2085 adds noticeable breathing room while keeping everything on one level. A dedicated home office near the front of the home provides separation from daily activity—ideal for remote work or quiet study. The kitchen opens to an oversized family room and dining area, creating a strong entertaining space. The primary suite is generously sized, while the additional half bath adds convenience for guests.

Priced From
\$359,900

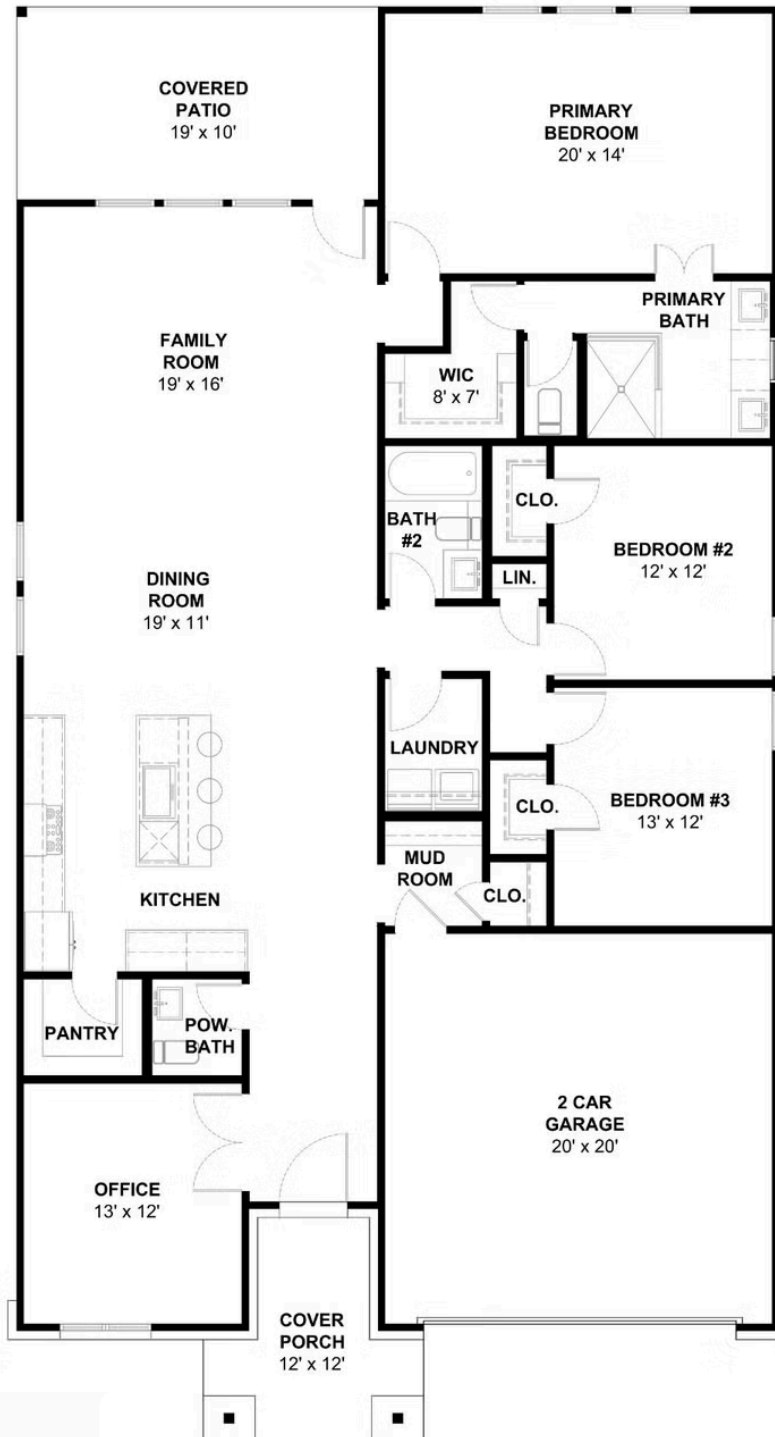
1 Elevation Available

-  **3** Bedrooms
-  **2.5** Bathrooms
-  **2,085+** Sq. Ft.
-  **2** Car Garage



All square footage is approximate. Renderings are artist's conceptions and may vary slightly from the actual home. Homes may be built in reverse of plans shown, depending on site conditions. Minor architectural changes may be made occasionally at the option of the builder. Please contact your Sales Consultant for details.

Elevation 2085 A



All square footage is approximate. Renderings are artist's conceptions and may vary slightly from the actual home. Homes may be built in reverse of plans shown, depending on site conditions. Minor architectural changes may be made occasionally at the option of the builder. Please contact your Sales Consultant for details.