



Single Family

Plan 1867

Mustang Meadows 50's

Plan 1867 is the most efficient entry into the 50' series, offering single-story living with added flexibility. The open family room and kitchen create a natural gathering space, while the dedicated flex room near the front of the home works perfectly as a home office, study, or hobby room. The primary suite is tucked away for privacy and features a spacious walk-in closet and en-suite bath. Secondary bedrooms are grouped together, making this plan ideal for buyers who want extra space without moving to a larger footprint.

Priced From
\$334,900

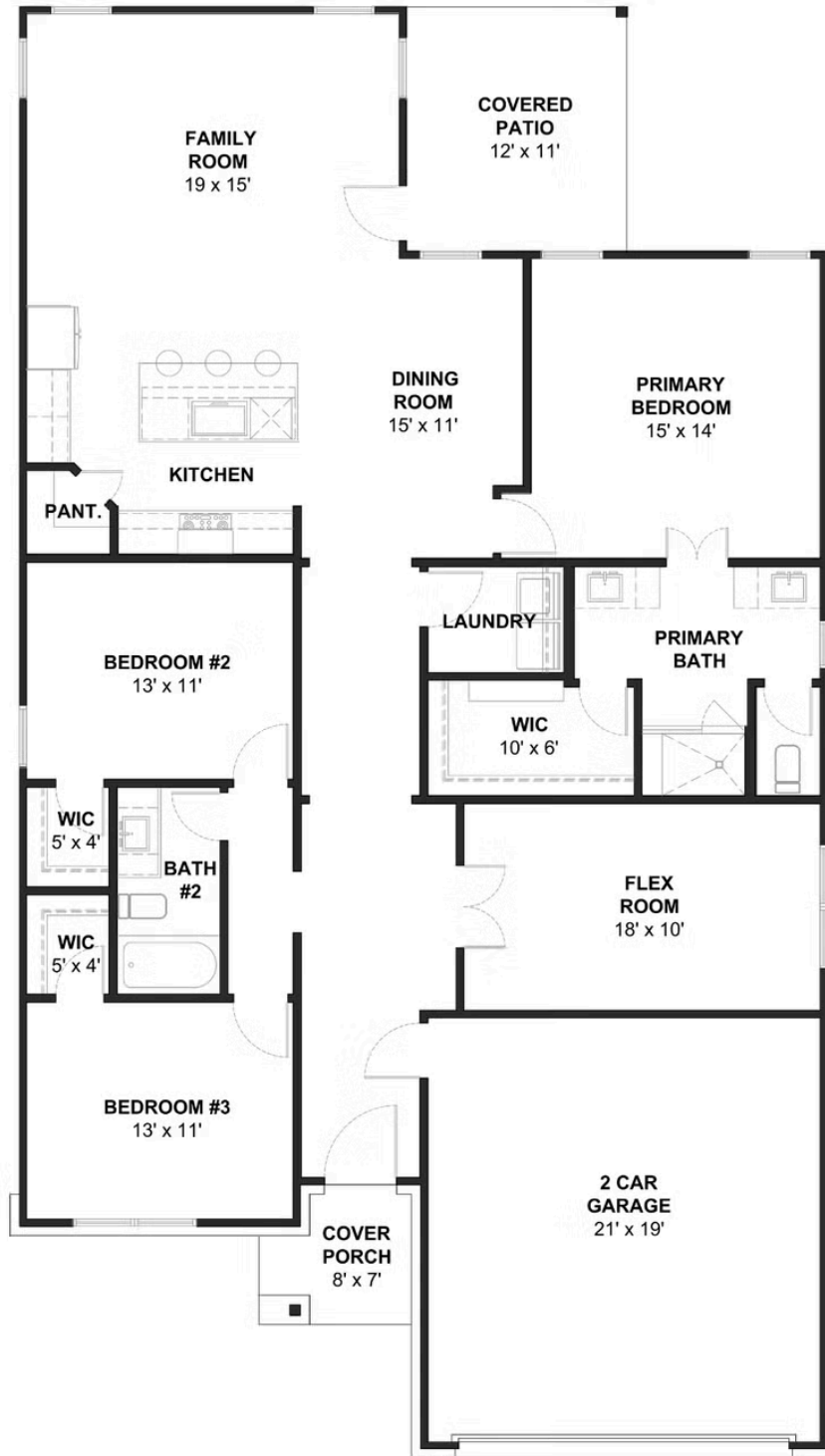
1 Elevation Available

-  **3** Bedrooms
-  **2** Bathrooms
-  **1,867+** Sq. Ft.
-  **2** Car Garage



All square footage is approximate. Renderings are artist's conceptions and may vary slightly from the actual home. Homes may be built in reverse of plans shown, depending on site conditions. Minor architectural changes may be made occasionally at the option of the builder. Please contact your Sales Consultant for details.

Elevation A



All square footage is approximate. Renderings are artist's conceptions and may vary slightly from the actual home. Homes may be built in reverse of plans shown, depending on site conditions. Minor architectural changes may be made occasionally at the option of the builder. Please contact your Sales Consultant for details.