



Single Family

Plan 3618


Arborwood

Offering a study, game room, and spacious kitchen with island, this home combines function and comfort. The oversized covered patio and large family room create inviting spaces for both family life and entertaining. With a split-bedroom design, everyone has privacy and flexibility. At Arborwood, enjoy a peaceful, welcoming community while staying close to local conveniences and neighborhood charm.

For more details or to express interest, contact us today!

Priced From
\$917,900

1 Elevation Available

 **4** Bedrooms

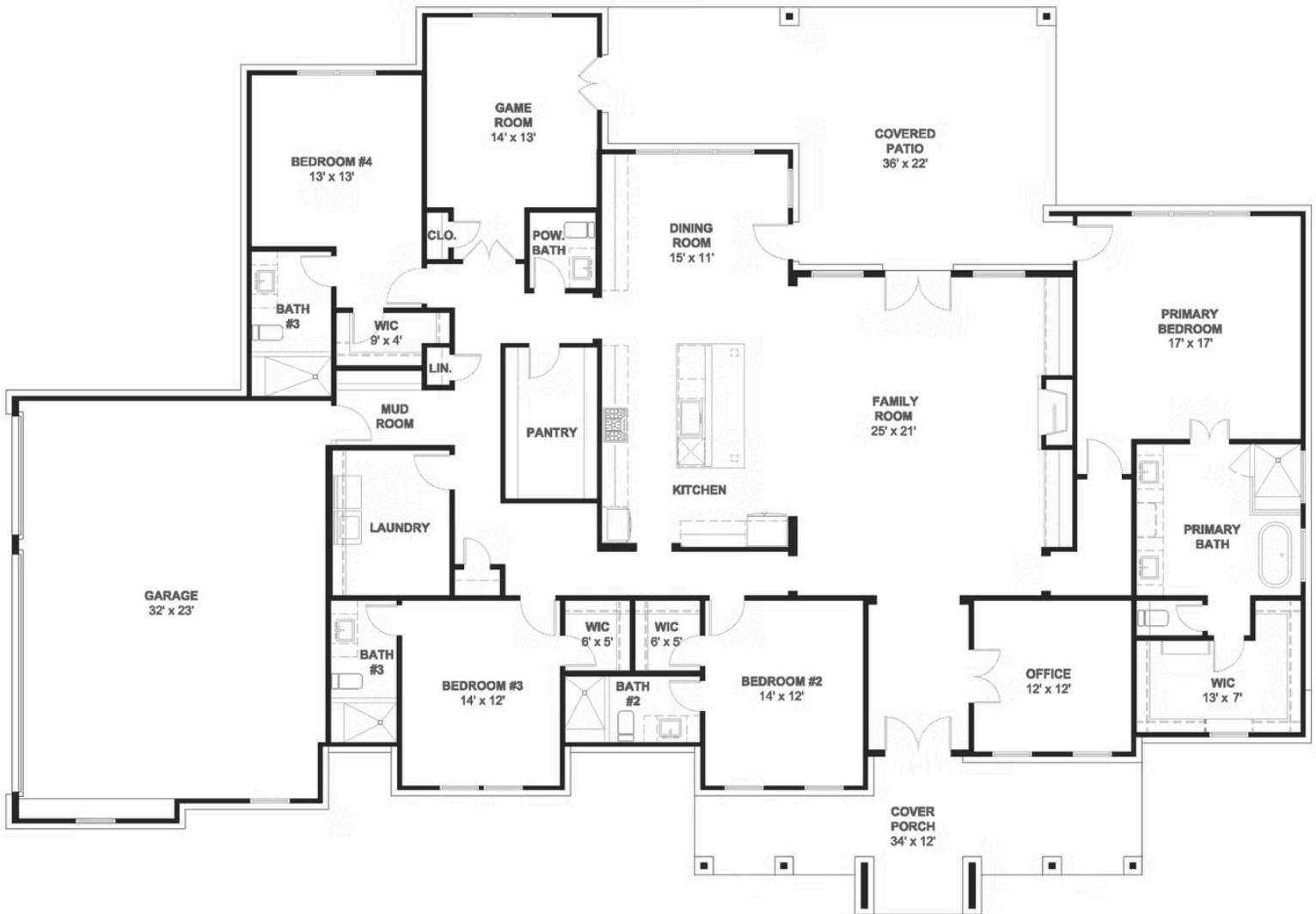
 **3.5** Bathrooms

 **3,618+** Sq. Ft.

 **3** Car Garage

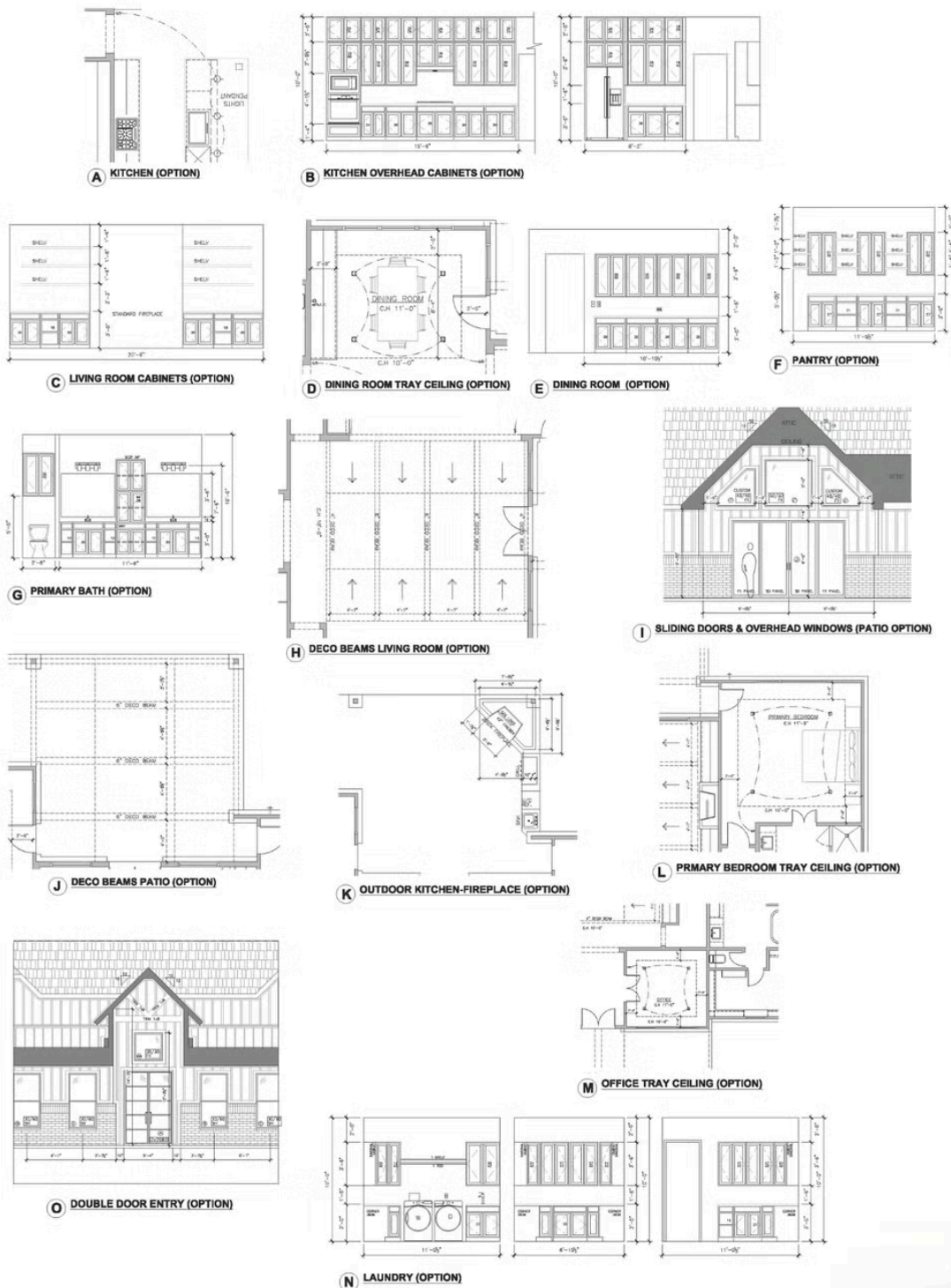


All square footage is approximate. Renderings are artist's conceptions and may vary slightly from the actual home. Homes may be built in reverse of plans shown, depending on site conditions. Minor architectural changes may be made occasionally at the option of the builder. Please contact your Sales Consultant for details.



Elevation 3618 A

All square footage is approximate. Renderings are artist's conceptions and may vary slightly from the actual home. Homes may be built in reverse of plans shown, depending on site conditions. Minor architectural changes may be made occasionally at the option of the builder. Please contact your Sales Consultant for details.



Elevation 3618 A Options

All square footage is approximate. Renderings are artist's conceptions and may vary slightly from the actual home. Homes may be built in reverse of plans shown, depending on site conditions. Minor architectural changes may be made occasionally at the option of the builder. Please contact your Sales Consultant for details.