



**Single Family**


## **Plan 3359**

**Arborwood**

Expansive single-story layout designed for larger families, centering on an open great room (18' x 17') with adjacent kitchen and dining (12' x 11'). Unique selling features include five bedrooms for ample privacy, a study (12' x 11') for home office use, walk-in pantry and utility areas, covered patio (18' x 10') for outdoor dining, and a three-car Texas garage—excellent for multi-generational households prioritizing space and convenience on rural lots.

**Priced From**  
**\$857,900**

**1 Elevation Available**

 **5** Bedrooms

 **3.5** Bathrooms

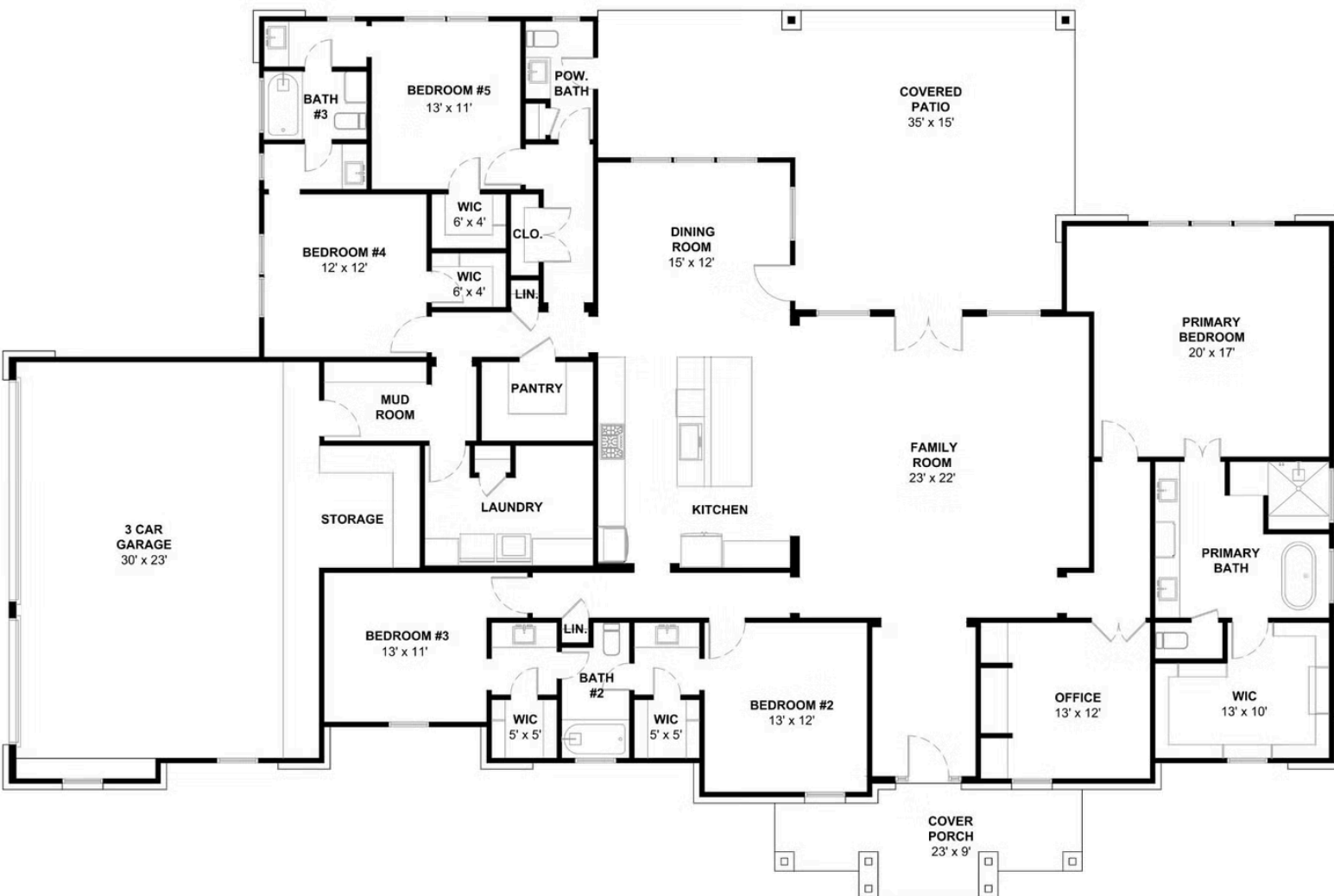
 **3,359+** Sq. Ft.

 **3** Car Garage



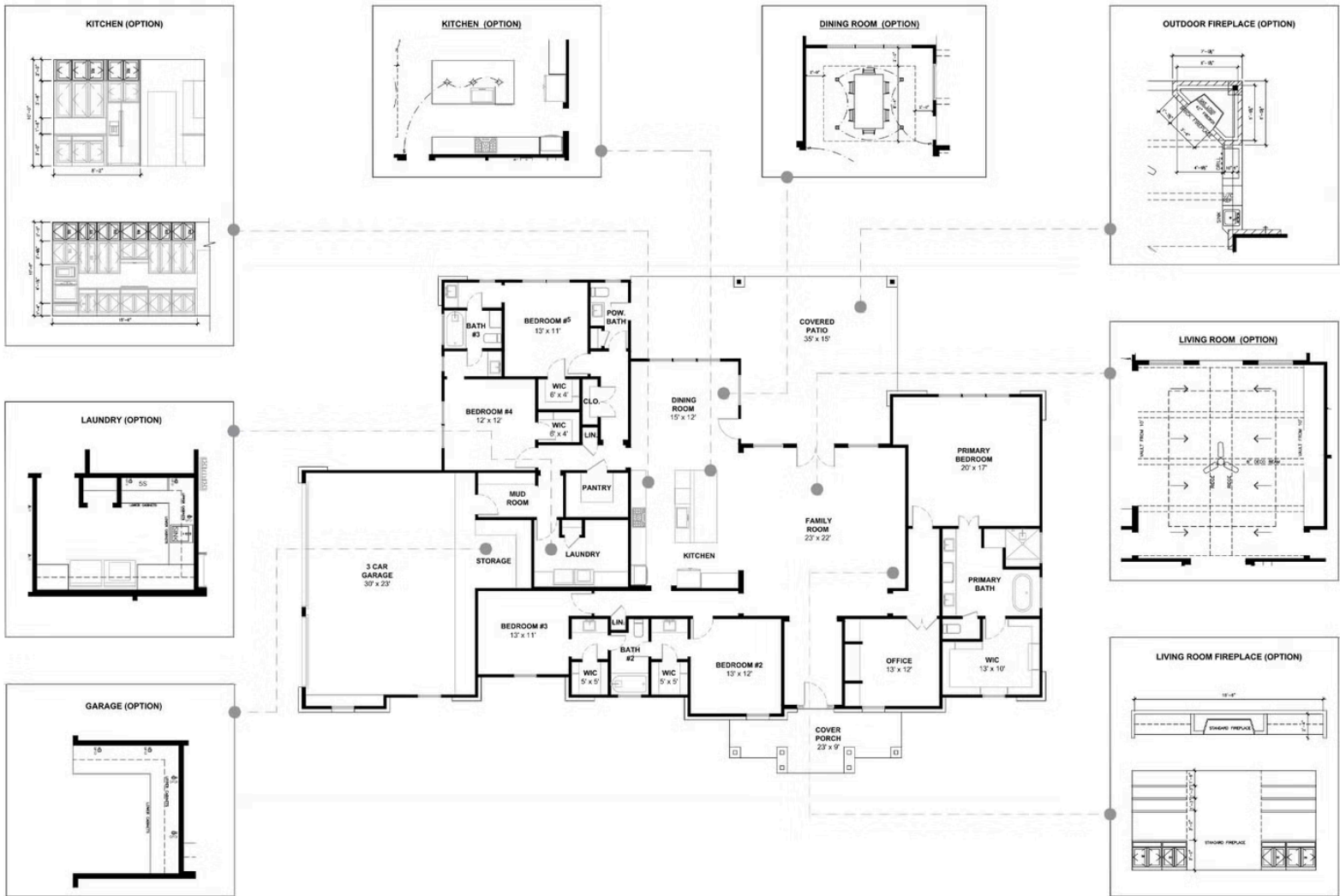
All square footage is approximate. Renderings are artist's conceptions and may vary slightly from the actual home. Homes may be built in reverse of plans shown, depending on site conditions. Minor architectural changes may be made occasionally at the option of the builder. Please contact your Sales Consultant for details.

## 3359 Elevation A



All square footage is approximate. Renderings are artist's conceptions and may vary slightly from the actual home. Homes may be built in reverse of plans shown, depending on site conditions. Minor architectural changes may be made occasionally at the option of the builder. Please contact your Sales Consultant for details.

## 3359 Elevation A Options



All square footage is approximate. Renderings are artist's conceptions and may vary slightly from the actual home. Homes may be built in reverse of plans shown, depending on site conditions. Minor architectural changes may be made occasionally at the option of the builder. Please contact your Sales Consultant for details.