



**Single Family**


**Plan 3301**

**Arborwood**

This ranch style home offers balanced living with a main-level open family room, kitchen, and dining combo, plus upstairs recreation space. Selling points include a dedicated study on the first floor, gameroom (approximately 17' x 15') for entertainment, primary suite with luxurious bath, multiple secondary bedrooms, covered patio for relaxation, and options for customization—ideal for growing families on acreage seeking separate zones for work and play.

**Priced From**  
**\$842,400**

**1 Elevation Available**

 **4** Bedrooms

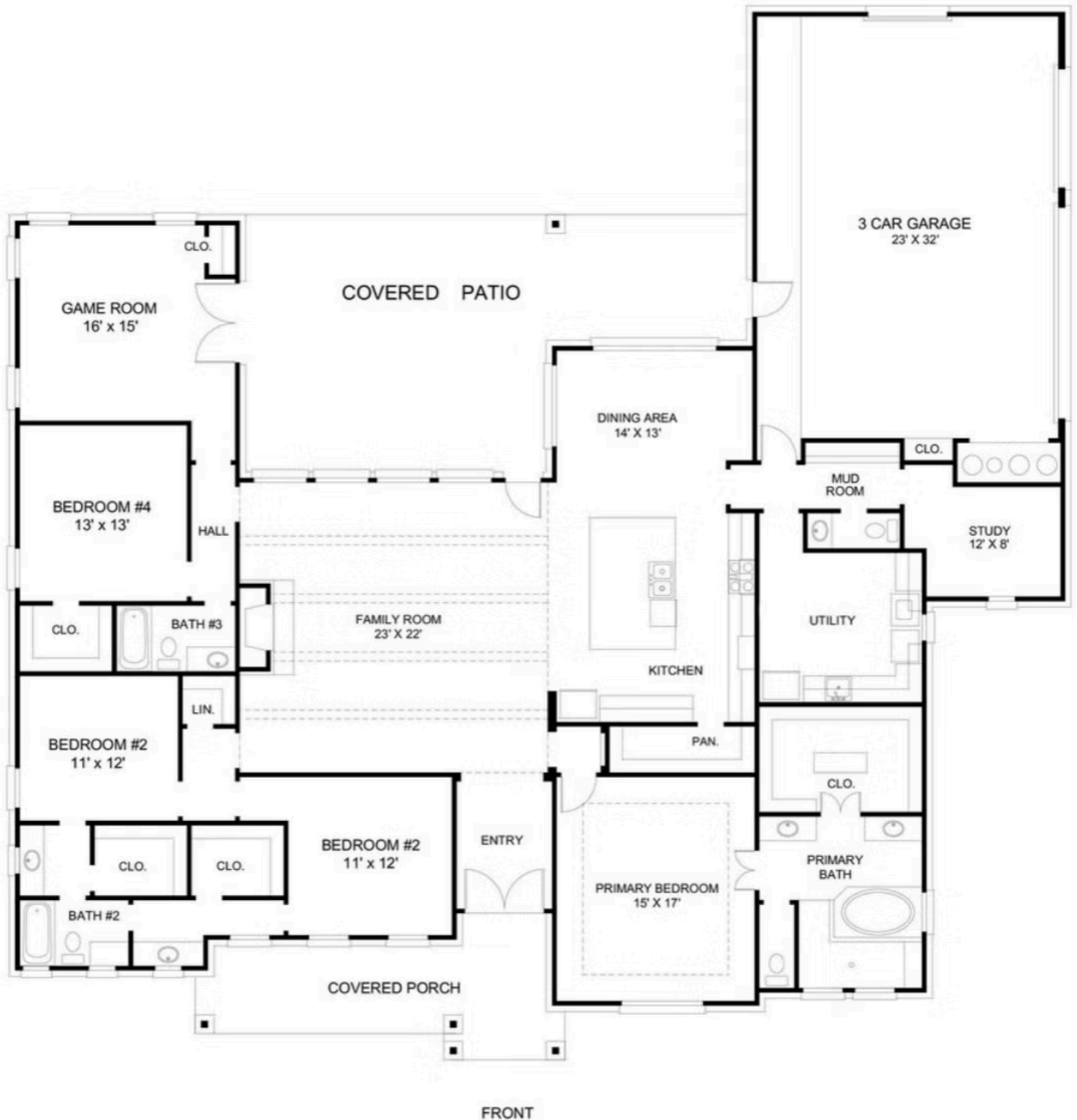
 **3** Bathrooms

 **3,301+** Sq. Ft.

 **3** Car Garage



All square footage is approximate. Renderings are artist's conceptions and may vary slightly from the actual home. Homes may be built in reverse of plans shown, depending on site conditions. Minor architectural changes may be made occasionally at the option of the builder. Please contact your Sales Consultant for details.



All square footage is approximate. Renderings are artist's conceptions and may vary slightly from the actual home. Homes may be built in reverse of plans shown, depending on site conditions. Minor architectural changes may be made occasionally at the option of the builder. Please contact your Sales Consultant for details.