

UNDER CONSTRUCTION




317 Rosalind Cir. Waller, TX 77484

A new home is on the way in Arborwood, Waller, TX! Set on a spacious 1+ acre lot, this thoughtfully designed home offers a functional layout with modern conveniences, providing ample room for outdoor living and privacy. Enjoy comfortable living in a tranquil, rural setting, just a short 5-minute drive from downtown Waller. For more details or to express interest, contact us today!

Home Priced At
\$859,900

Plan: Plan 3042

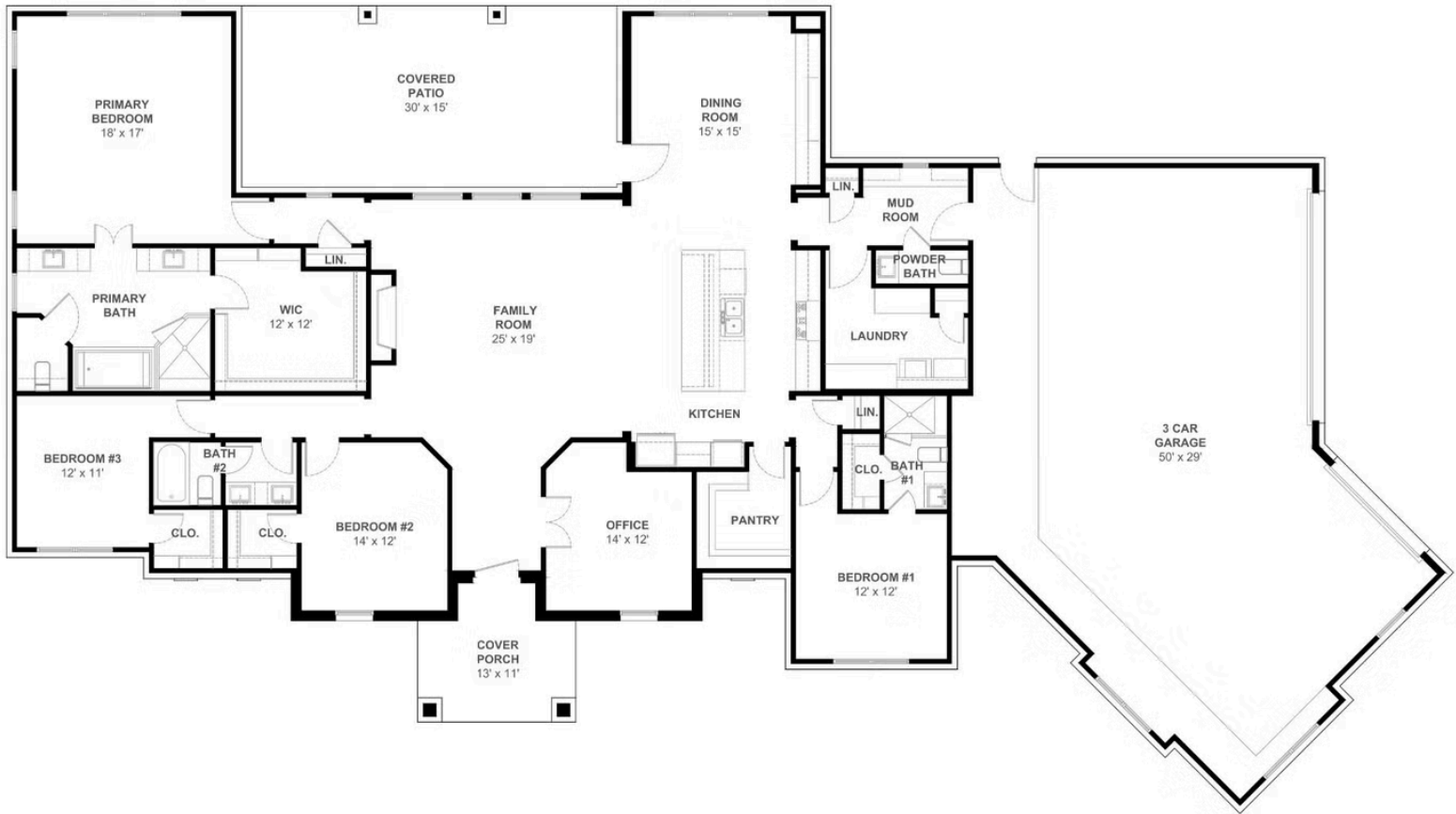
 **4** Bedrooms

 **3.5** Bathrooms

 **3,042** Sq. Ft.

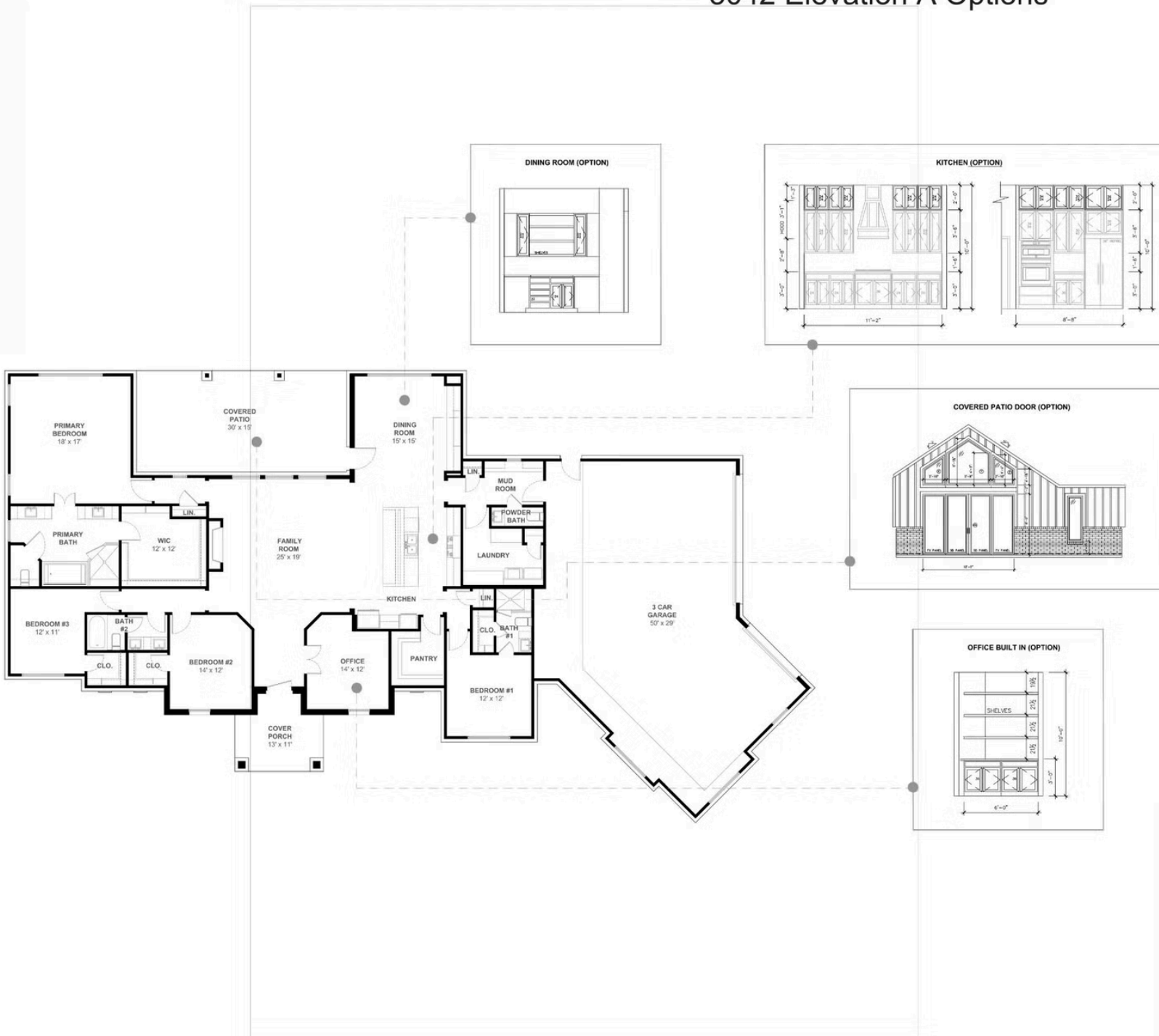
All square footage is approximate. Renderings are artist's conceptions and may vary slightly from the actual home. Homes may be built in reverse of plans shown, depending on site conditions. Minor architectural changes may be made occasionally at the option of the builder. Please contact your Sales Consultant for details.

3042 Elevation A



All square footage is approximate. Renderings are artist's conceptions and may vary slightly from the actual home. Homes may be built in reverse of plans shown, depending on site conditions. Minor architectural changes may be made occasionally at the option of the builder. Please contact your Sales Consultant for details.

3042 Elevation A Options



All square footage is approximate. Renderings are artist's conceptions and may vary slightly from the actual home. Homes may be built in reverse of plans shown, depending on site conditions. Minor architectural changes may be made occasionally at the option of the builder. Please contact your Sales Consultant for details.