



Single Family


Plan 3018

Arborwood

A family-oriented one-story design emphasizing flow, with an expansive family room (approximately 18' x 16') open to the gourmet kitchen and formal dining room. Key highlights include a home office for work-from-home needs, luxurious primary suite with spa-like bath and dual closets, secondary bedrooms with shared baths, covered porch and patio for outdoor gatherings, and integrated utility room—great for multi-generational living on spacious acreage.

Priced From
\$812,900

1 Elevation Available

 **4** Bedrooms

 **3.5** Bathrooms

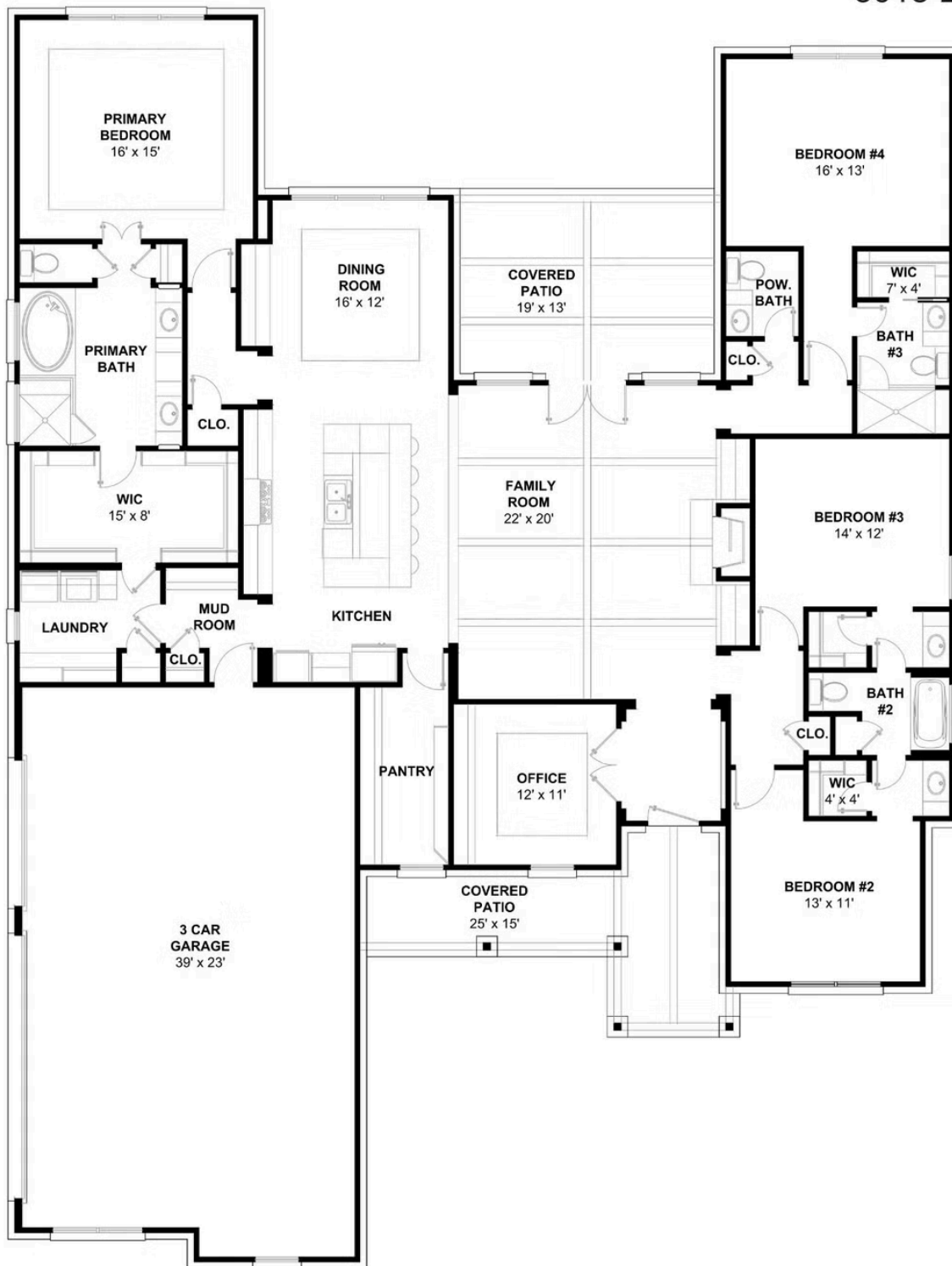
 **3,018+** Sq. Ft.

 **3** Car Garage



All square footage is approximate. Renderings are artist's conceptions and may vary slightly from the actual home. Homes may be built in reverse of plans shown, depending on site conditions. Minor architectural changes may be made occasionally at the option of the builder. Please contact your Sales Consultant for details.

3018 Elevation A



All square footage is approximate. Renderings are artist's conceptions and may vary slightly from the actual home. Homes may be built in reverse of plans shown, depending on site conditions. Minor architectural changes may be made occasionally at the option of the builder. Please contact your Sales Consultant for details.