



Single Family


Plan 3000

Arborwood

Spacious and versatile single-story layout with a central open-concept living area, including a family room flowing into the kitchen with island and adjacent dining space. Standout elements include a private office for productivity, multiple bedrooms with en-suite options, walk-in closets in the primary suite, covered patio for al fresco living, and ample storage solutions—suited for families desiring comfort and flexibility in a rural setting.

Priced From
\$792,900

1 Elevation Available

 **4** Bedrooms

 **3.5** Bathrooms

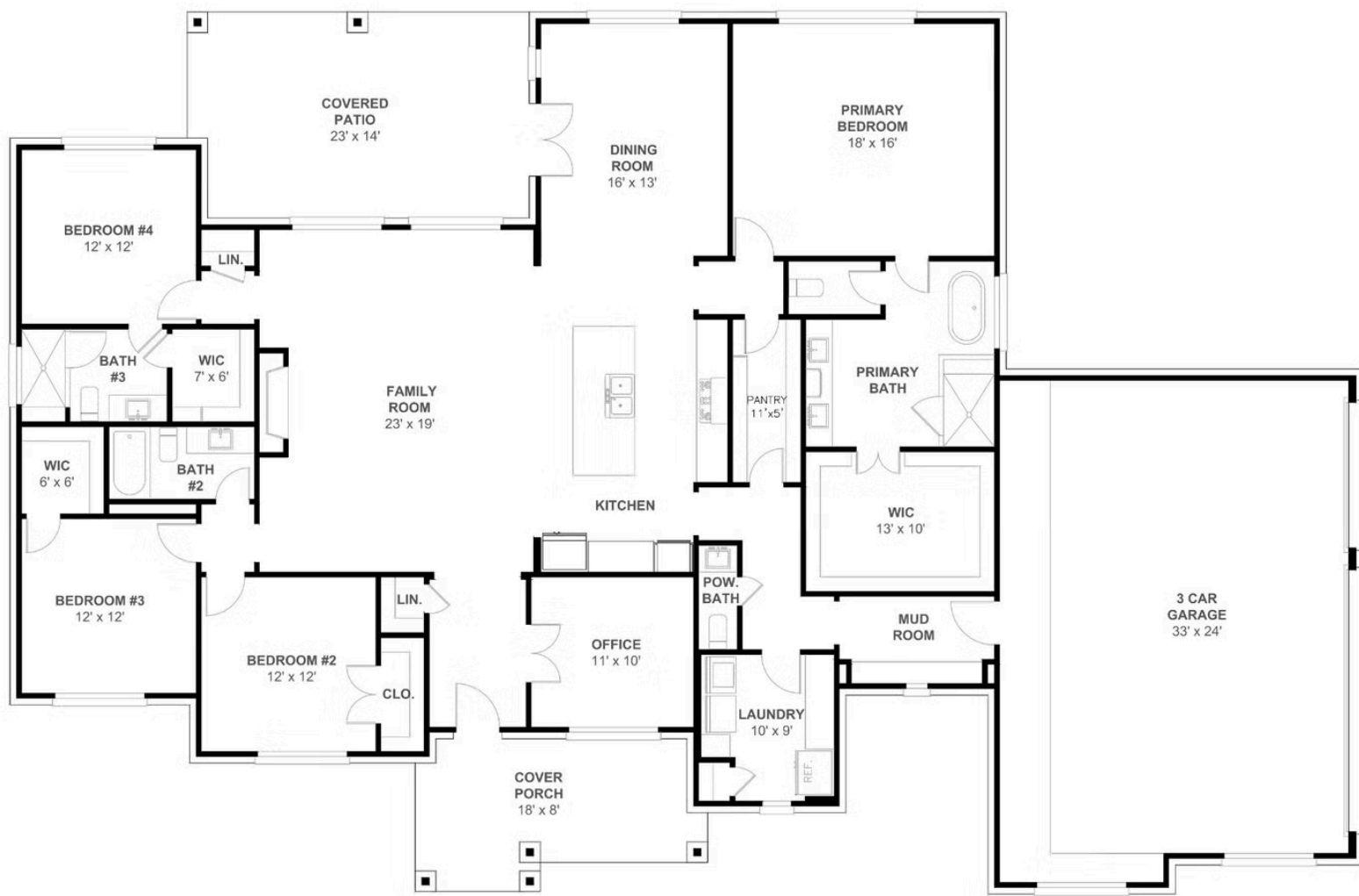
 **3,000+** Sq. Ft.

 **3** Car Garage

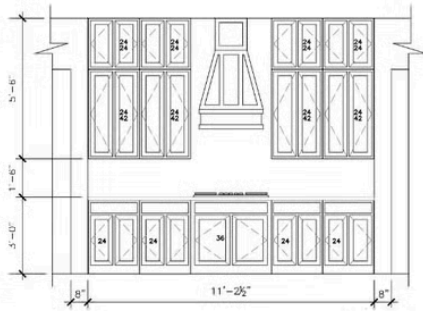


All square footage is approximate. Renderings are artist's conceptions and may vary slightly from the actual home. Homes may be built in reverse of plans shown, depending on site conditions. Minor architectural changes may be made occasionally at the option of the builder. Please contact your Sales Consultant for details.

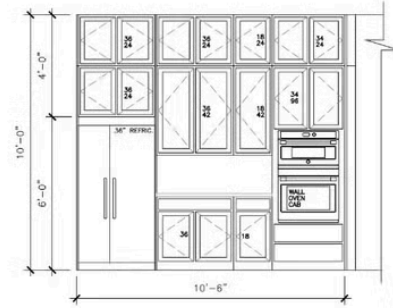
3000 Elevation A



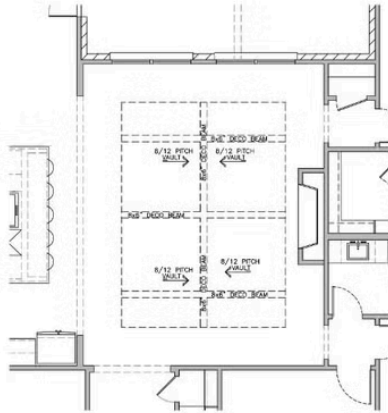
All square footage is approximate. Renderings are artist's conceptions and may vary slightly from the actual home. Homes may be built in reverse of plans shown, depending on site conditions. Minor architectural changes may be made occasionally at the option of the builder. Please contact your Sales Consultant for details.



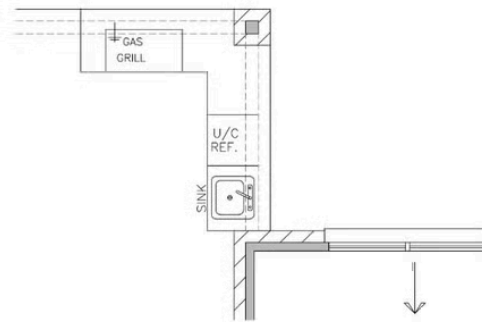
A KITCHEN (OPT.)



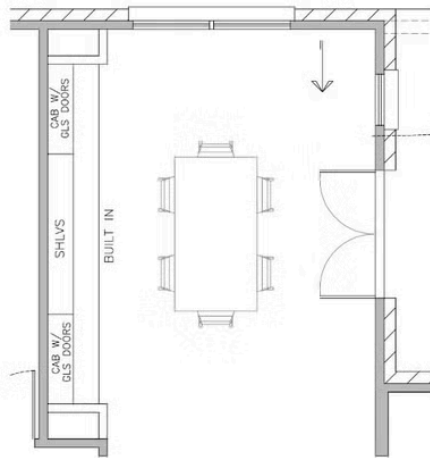
B KITCHEN (OPT.)



C FAMILY ROOM (OPT.)



D OUTDOOR KITCHEN (OPT.)



E DINING ROOM (OPT.)

3000 Elevation A Options

All square footage is approximate. Renderings are artist's conceptions and may vary slightly from the actual home. Homes may be built in reverse of plans shown, depending on site conditions. Minor architectural changes may be made occasionally at the option of the builder. Please contact your Sales Consultant for details.