



Single Family


Plan 2763

Arborwood

A new home is on the way in Arborwood, Waller, TX! Set on a spacious 1+ acre lot, this thoughtfully designed home offers a functional layout with modern conveniences, providing ample room for outdoor living and privacy. Enjoy comfortable living in a tranquil, rural setting, just a short 5-minute drive from downtown Waller. For more details or to express interest, contact us today!

Priced From
\$757,900

2 Elevations Available

 **4** Bedrooms

 **3.5** Bathrooms

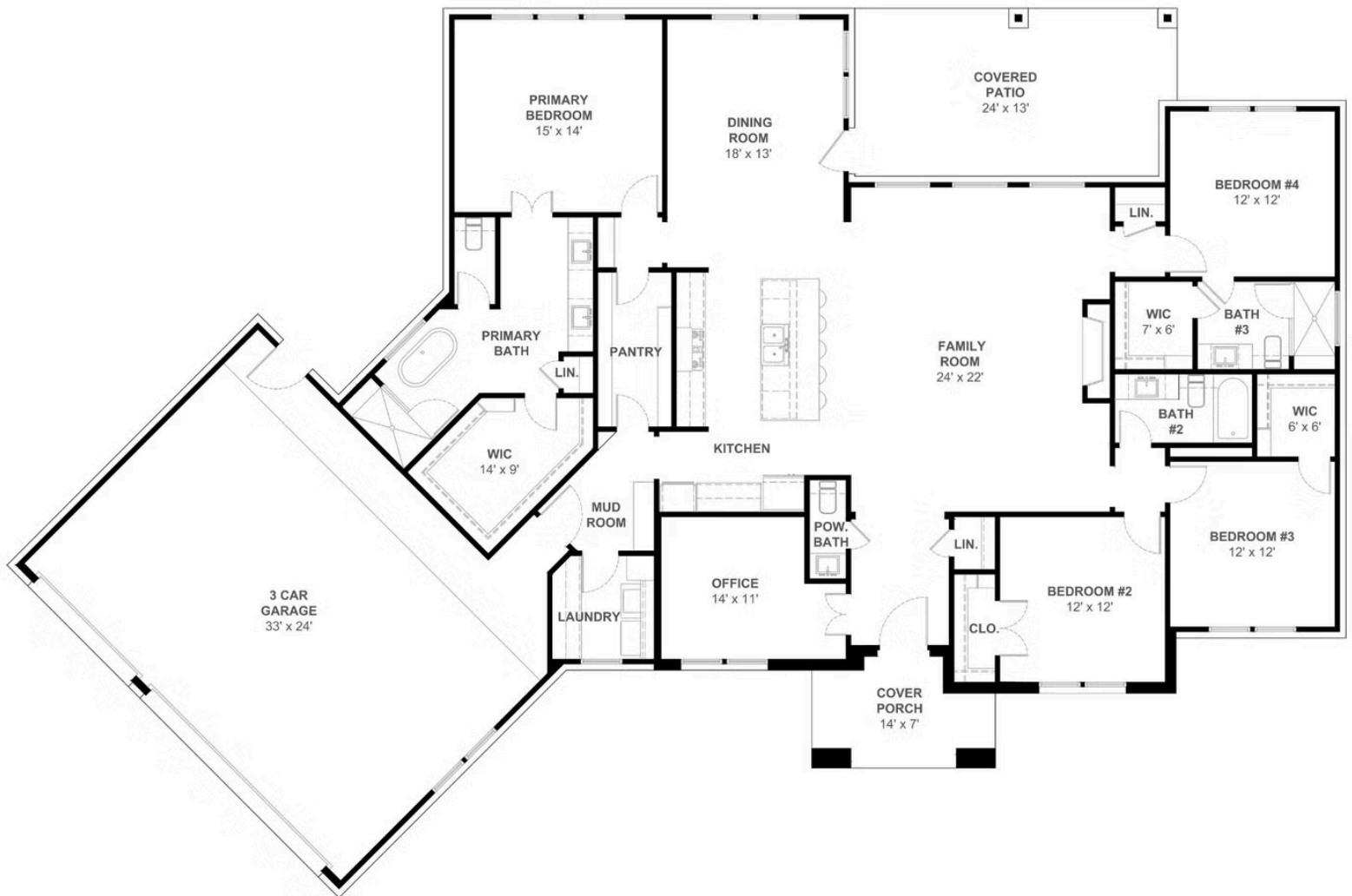
 **2,763+** Sq. Ft.

 **3** Car Garage



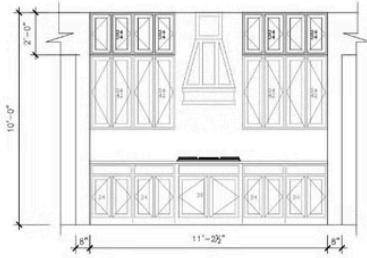
All square footage is approximate. Renderings are artist's conceptions and may vary slightly from the actual home. Homes may be built in reverse of plans shown, depending on site conditions. Minor architectural changes may be made occasionally at the option of the builder. Please contact your Sales Consultant for details.

2763 Elevation A

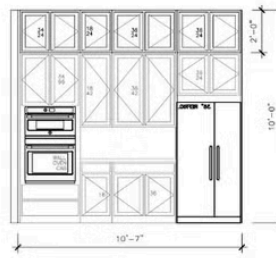


All square footage is approximate. Renderings are artist's conceptions and may vary slightly from the actual home. Homes may be built in reverse of plans shown, depending on site conditions. Minor architectural changes may be made occasionally at the option of the builder. Please contact your Sales Consultant for details.

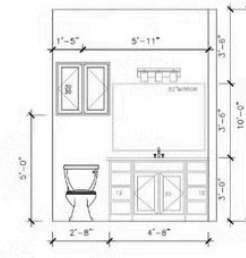
2763 Elevation A Options



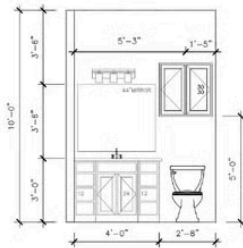
A KITCHEN (OPT.)



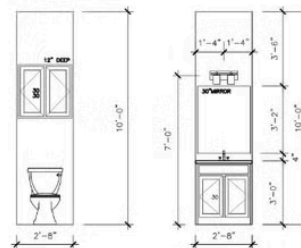
B KITCHEN (OPT.)



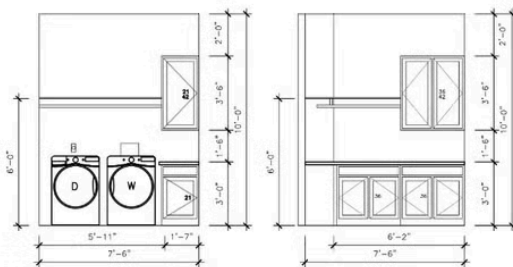
C BATH #2 (OPT.)



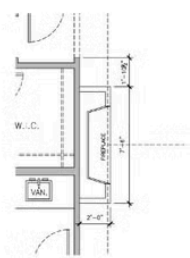
D BATH #3 (OPT.)



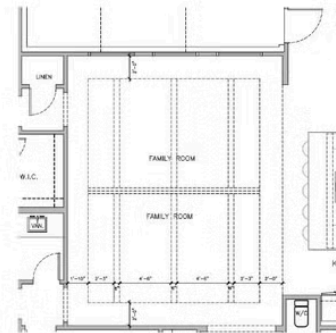
E POWDER (OPT.)



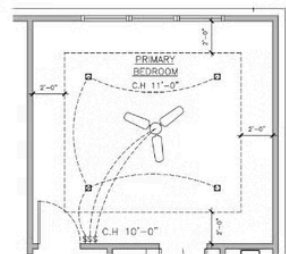
F LAUNDRY (OPT.)



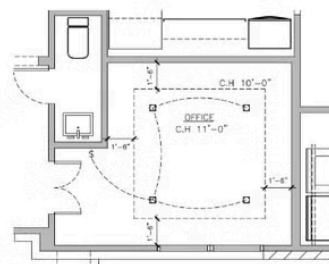
G FIRE PLACE (OPT.)



H LIVING ROOM BEAMS (OPT.)



I PRIMARY BEDROOM (OPT.)



J OFFICE (OPT.)

All square footage is approximate. Renderings are artist's conceptions and may vary slightly from the actual home. Homes may be built in reverse of plans shown, depending on site conditions. Minor architectural changes may be made occasionally at the option of the builder. Please contact your Sales Consultant for details.