

SALE PENDING




221 Arborwood Dr. Waller, TX 77484

A new home is on the way in Arborwood, Waller, TX! Set on a spacious 1+ acre lot, this thoughtfully designed home offers a functional layout with modern conveniences, providing ample room for outdoor living and privacy. Enjoy comfortable living in a tranquil, rural setting, just a short 5-minute drive from downtown Waller. For more details or to express interest, contact us today!

SALE PENDING

Plan: Plan 2615

 **4** Bedrooms

 **3.5** Bathrooms

 **2,615** Sq. Ft.

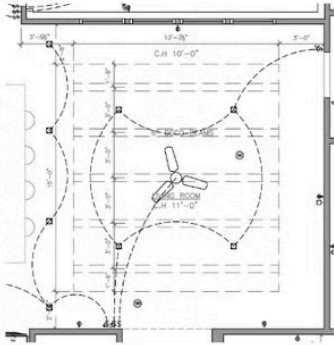
All square footage is approximate. Renderings are artist's conceptions and may vary slightly from the actual home. Homes may be built in reverse of plans shown, depending on site conditions. Minor architectural changes may be made occasionally at the option of the builder. Please contact your Sales Consultant for details.

2615 Elevation A

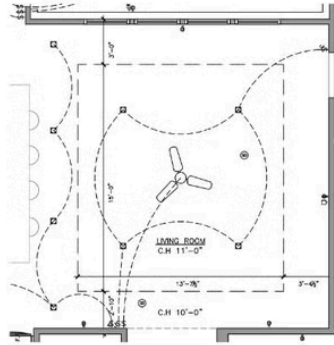


All square footage is approximate. Renderings are artist's conceptions and may vary slightly from the actual home. Homes may be built in reverse of plans shown, depending on site conditions. Minor architectural changes may be made occasionally at the option of the builder. Please contact your Sales Consultant for details.

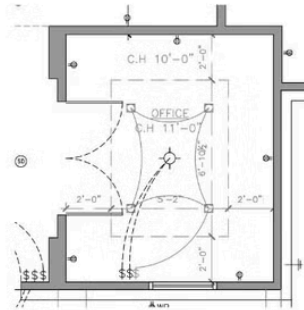
2615 Elevation A Options



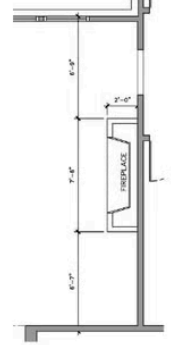
A LIVING ROOM (OPT.)



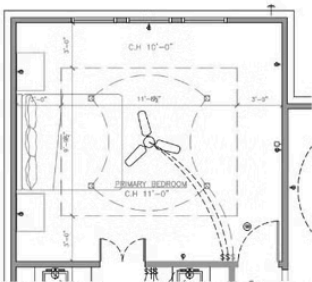
B LIVING ROOM (OPT.)



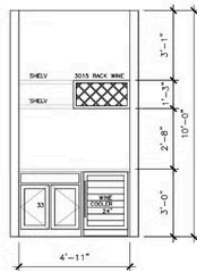
C OFFICE (OPT.)



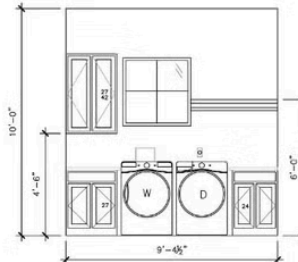
D FIREPLACE (OPT.)



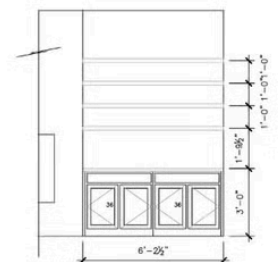
E PRIMARY BEDROOM (OPT.)



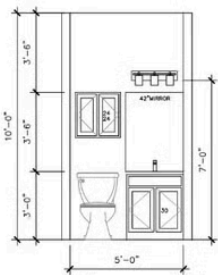
F BUILT-IN CABINET WINE BAR



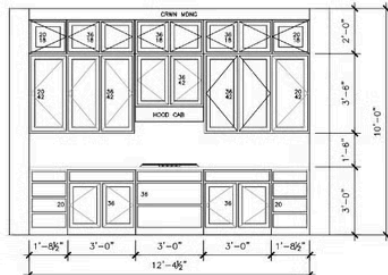
G LAUNDRY (OPT.)



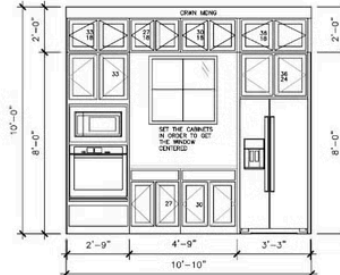
H FIREPLACE BUILT-IN (OPT.)



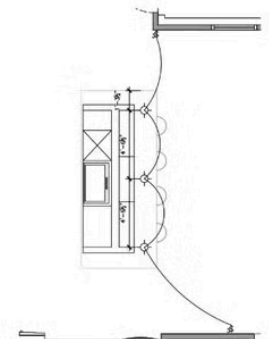
I POWDER BATH (OPT.)



J KITCHEN (OPT.)



K KITCHEN (OPT.)



L KITCHEN PENDANTS (OPT.)

All square footage is approximate. Renderings are artist's conceptions and may vary slightly from the actual home. Homes may be built in reverse of plans shown, depending on site conditions. Minor architectural changes may be made occasionally at the option of the builder. Please contact your Sales Consultant for details.