

SALE PENDING




***337 Rosalind Cir.
Waller, TX 77484***

This efficient single-story home is perfect for smaller households, featuring an open family room connected to the kitchen and dining area for seamless entertaining. Unique selling features include a dedicated study for remote work, walk-in pantry for storage convenience, covered porch for outdoor enjoyment, utility suite, and a Texas garage—ideal for those seeking affordability and practicality on an acreage lot.

SALE PENDING

Plan: Plan 2521

 **3** Bedrooms

 **2.5** Bathrooms

 **2,521** Sq. Ft.

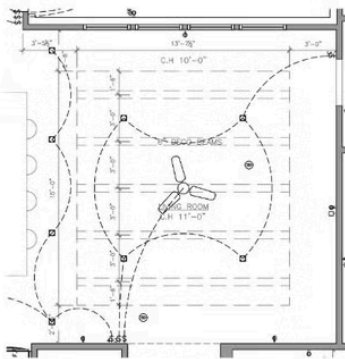
All square footage is approximate. Renderings are artist's conceptions and may vary slightly from the actual home. Homes may be built in reverse of plans shown, depending on site conditions. Minor architectural changes may be made occasionally at the option of the builder. Please contact your Sales Consultant for details.

2521 Elevation A

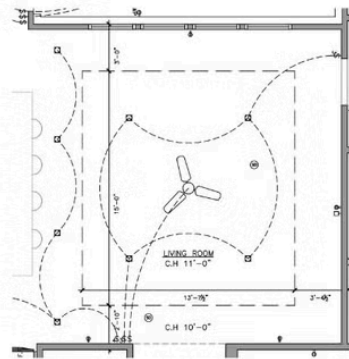


All square footage is approximate. Renderings are artist's conceptions and may vary slightly from the actual home. Homes may be built in reverse of plans shown, depending on site conditions. Minor architectural changes may be made occasionally at the option of the builder. Please contact your Sales Consultant for details.

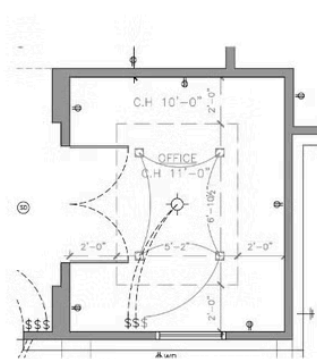
2521 Elevation A Options



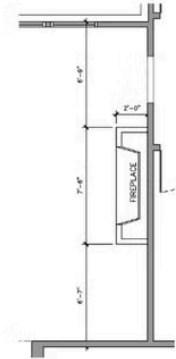
A LIVING ROOM (OPT.)



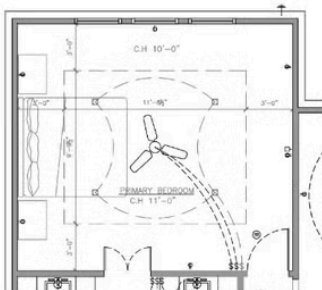
B LIVING ROOM (OPT.)



C OFFICE (OPT.)



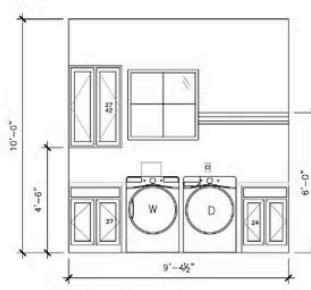
D FIREPLACE (OPT.)



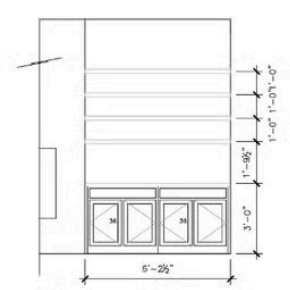
E PRIMARY BEDROOM (OPT.)



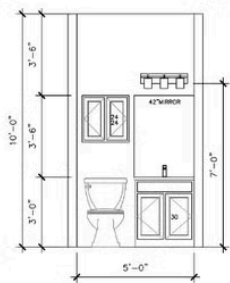
F BUILT-IN CABINET WINE BAR



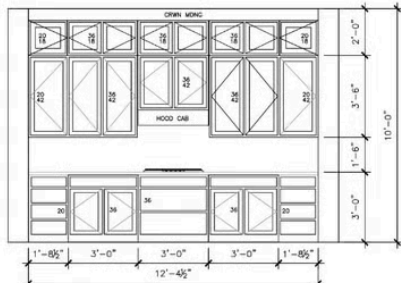
G LAUNDRY (OPT.)



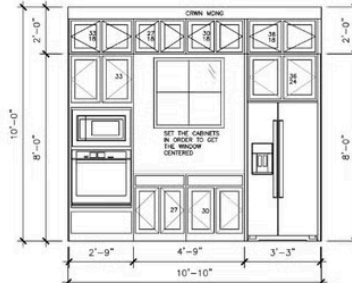
H FIREPLACE BUILT-IN (OPT.)



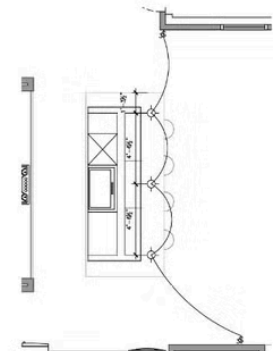
I POWDER BATH (OPT.)



J KITCHEN (OPT.)



K KITCHEN (OPT.)



L KITCHEN PENDANTS (OPT.)

All square footage is approximate. Renderings are artist's conceptions and may vary slightly from the actual home. Homes may be built in reverse of plans shown, depending on site conditions. Minor architectural changes may be made occasionally at the option of the builder. Please contact your Sales Consultant for details.