

UNDER CONSTRUCTION




325 Rosalind Cir. Waller, TX 77484

A new home is on the way in Arborwood, Waller, TX! Set on a spacious 1+ acre lot, this thoughtfully designed home offers a functional layout with modern conveniences, providing ample room for outdoor living and privacy. Enjoy comfortable living in a tranquil, rural setting, just a short 5-minute drive from downtown Waller. For more details or to express interest, contact us today!

Home Priced At
\$674,900

Plan: Plan 2391

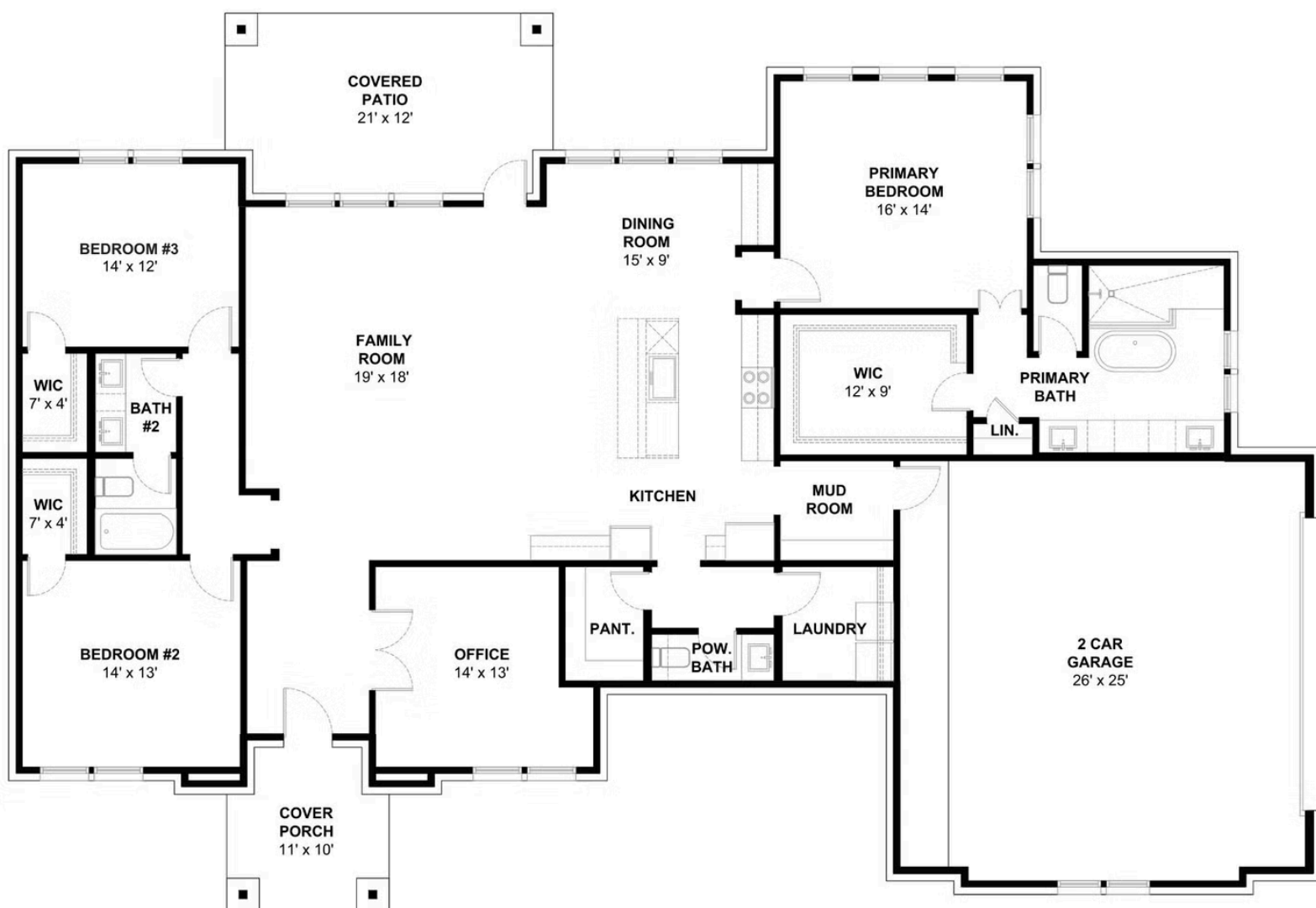
 **3** Bedrooms

 **2.5** Bathrooms

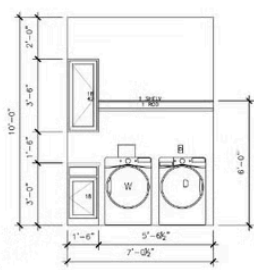
 **2,391** Sq. Ft.

All square footage is approximate. Renderings are artist's conceptions and may vary slightly from the actual home. Homes may be built in reverse of plans shown, depending on site conditions. Minor architectural changes may be made occasionally at the option of the builder. Please contact your Sales Consultant for details.

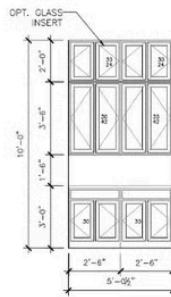
2391 Elevation A



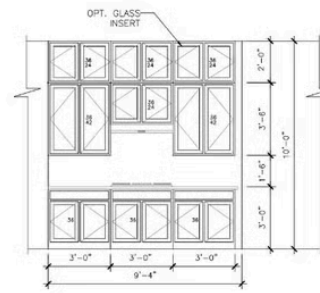
All square footage is approximate. Renderings are artist's conceptions and may vary slightly from the actual home. Homes may be built in reverse of plans shown, depending on site conditions. Minor architectural changes may be made occasionally at the option of the builder. Please contact your Sales Consultant for details.



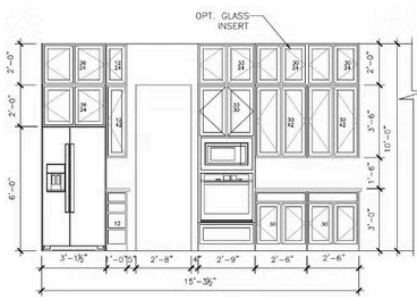
A LAUNDRY CABINETS (OPT.)



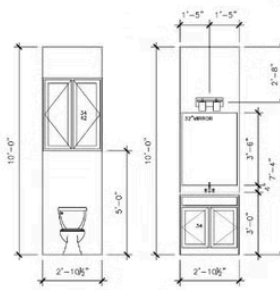
B DINING CABINETS (OPT.)



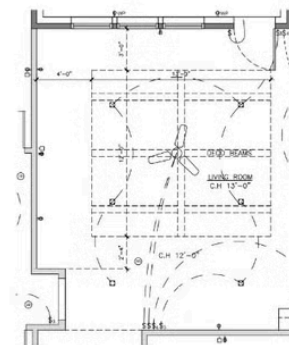
C KITCHEN CABINETS (OPT.)



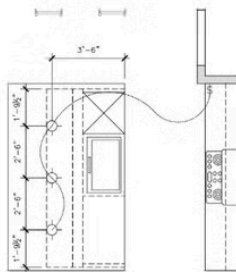
C KITCHEN CABINETS (OPT.)



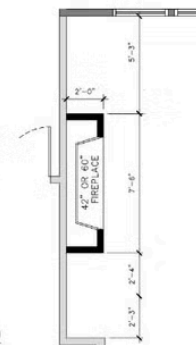
D POWDER BATH (OPT.)



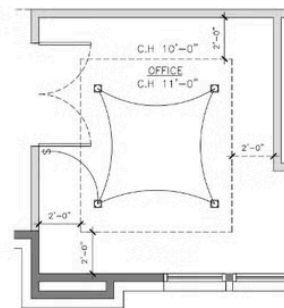
E LIVING ROOM (OPT.)



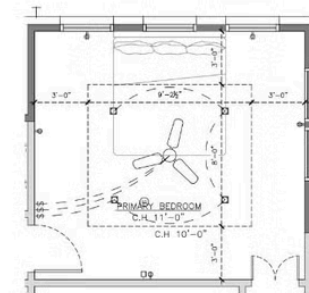
F KITCHEN PENDANTS (OPT.)



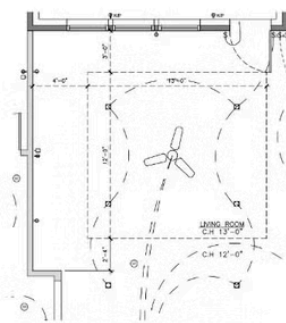
G FIREPLACE (OPT.)



H OFFICE (OPT.)



I PRIMARY BED (OPT.)



J LIVING ROOM (OPT.)

2391 Elevation A Options

All square footage is approximate. Renderings are artist's conceptions and may vary slightly from the actual home. Homes may be built in reverse of plans shown, depending on site conditions. Minor architectural changes may be made occasionally at the option of the builder. Please contact your Sales Consultant for details.