

UNDER CONSTRUCTION



2517 Elevation F


324 Legacy Point Dr. Sealy, TX 77474

The 2517 is versatile and accommodating, featuring an open-concept main level with family room, island kitchen, and formal dining, plus a dedicated office. Four bedrooms include a luxurious primary suite, complemented by 3.5 baths for privacy. An extended garage offers additional storage, while a covered porch and oversized patio create inviting outdoor spaces. A perfect fit for families seeking flexibility across lot sizes with enhanced vehicle accommodation.

For more details or to express interest, contact us today!

Home Priced At
\$479,900

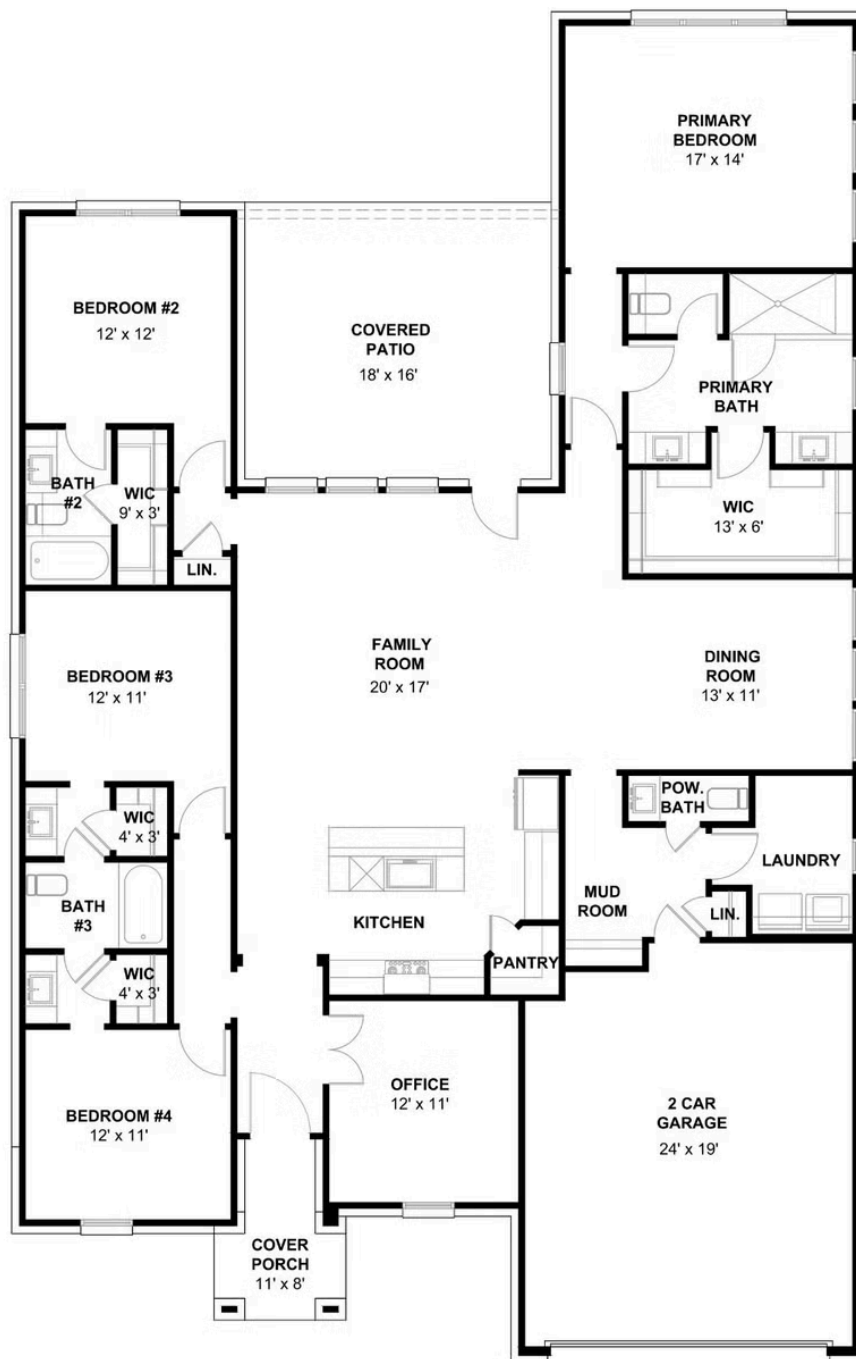
Plan: Plan 2517

 **4** Bedrooms

 **3.5** Bathrooms

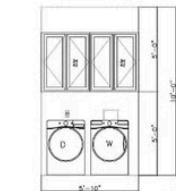
 **2,517** Sq. Ft.

Elevation 2517 E

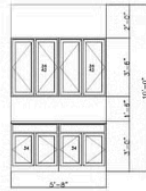


All square footage is approximate. Renderings are artist's conceptions and may vary slightly from the actual home. Homes may be built in reverse of plans shown, depending on site conditions. Minor architectural changes may be made occasionally at the option of the builder. Please contact your Sales Consultant for details.

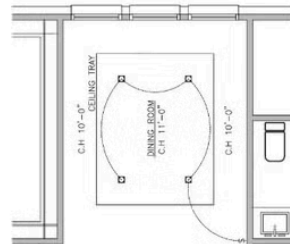
Elevation 2517 E Options



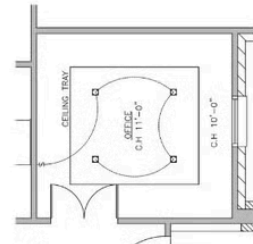
A LAUNDRY (OPTION)



B LAUNDRY (OPTION)



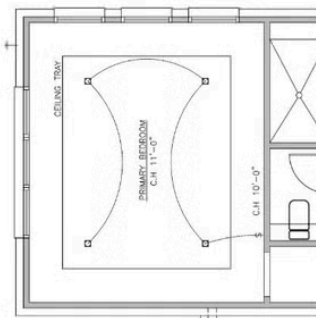
C DINING ROOM (OPTION)



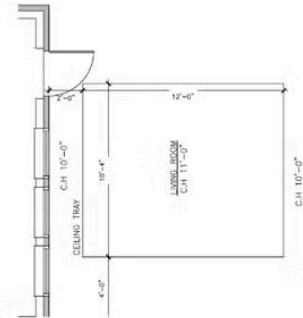
D OFFICE (OPTION)



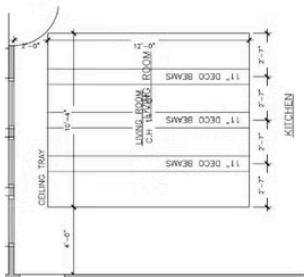
E BATH #3 (OPTION)



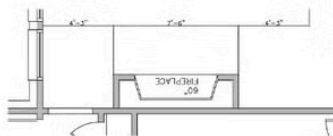
F PRIMARY BEDROOM (OPTION)



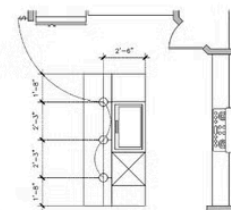
G LIVING ROOM (OPTION)



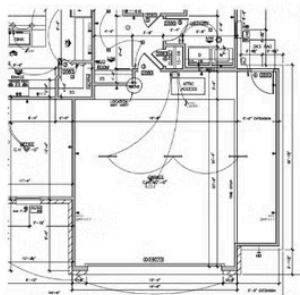
H LIVING ROOM BEAMS (OPTION)



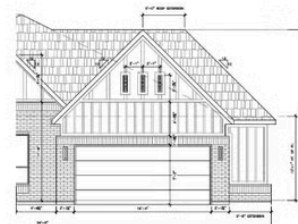
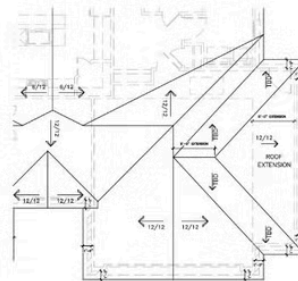
I LIVING ROOM (OPTION)



J KITCHEN PENDANT(OPTION)



K 5' BUMP OUT (OPTION)



All square footage is approximate. Renderings are artist's conceptions and may vary slightly from the actual home. Homes may be built in reverse of plans shown, depending on site conditions. Minor architectural changes may be made occasionally at the option of the builder. Please contact your Sales Consultant for details.