

UNDER CONSTRUCTION




304 Fawn Hill Ln. Sealy, TX 77474

The 2517 is versatile and accommodating, featuring an open-concept main level with family room, island kitchen, and formal dining, plus a dedicated office. Four bedrooms include a luxurious primary suite, complemented by 3.5 baths for privacy. An extended garage offers additional storage, while a covered porch and oversized patio create inviting outdoor spaces. A perfect fit for families seeking flexibility across lot sizes with enhanced vehicle accommodation.

For more details or to express interest, contact us today!

Home Priced At
\$469,900

Plan: Plan 2517

 **4** Bedrooms

 **3.5** Bathrooms

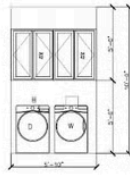
 **2,517** Sq. Ft.

Elevation 2517 C

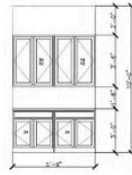


All square footage is approximate. Renderings are artist's conceptions and may vary slightly from the actual home. Homes may be built in reverse of plans shown, depending on site conditions. Minor architectural changes may be made occasionally at the option of the builder. Please contact your Sales Consultant for details.

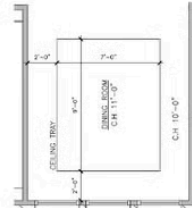
Elevation 2517 C Options



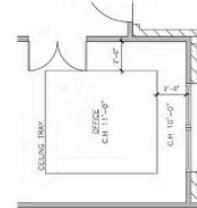
A LAUNDRY (OPTION)



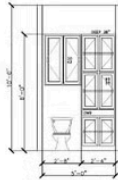
B LAUNDRY (OPTION)



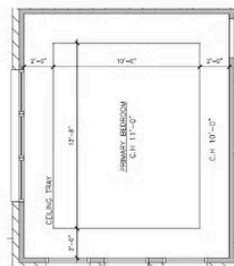
C DINING ROOM CEILING (OPT.)



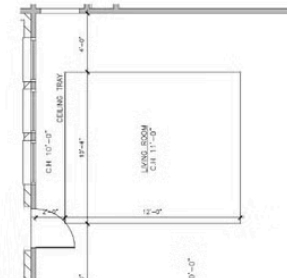
D OFFICE CEILING (OPT.)



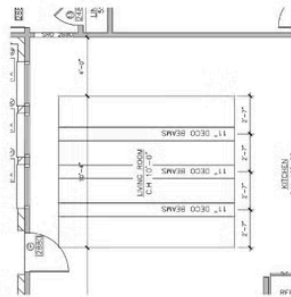
E BATH #3 (OPTION)



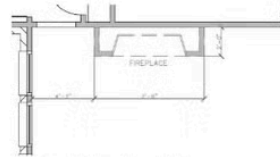
F PRIMARY BED CEILING (OPT.)



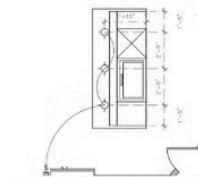
G LIVING ROOM (OPT.)



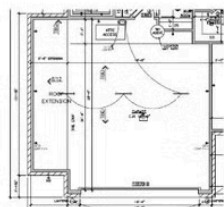
H LIVING ROOM (OPT.)



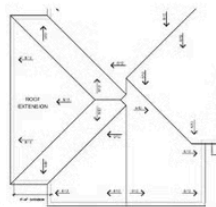
I FIREPLACE (OPTION)



J KITCHEN LIGHTS (OPTION)



K 5' GARAGE EXTENSION (OPTION)



All square footage is approximate. Renderings are artist's conceptions and may vary slightly from the actual home. Homes may be built in reverse of plans shown, depending on site conditions. Minor architectural changes may be made occasionally at the option of the builder. Please contact your Sales Consultant for details.