

MOVE-IN READY




369 Covey Ln. Sealy, TX 77474

Expansive and accommodating, the 2246 provides four bedrooms and an open central living area designed for easy hosting. Three full baths ensure comfort for family and guests, while garage options like a five-foot extension or third-car bay add flexibility. With multiple elevations available, this plan is an excellent fit for larger families seeking room to grow with customizable features.

For more details or to express interest, contact us today!

Home Priced At
\$404,900

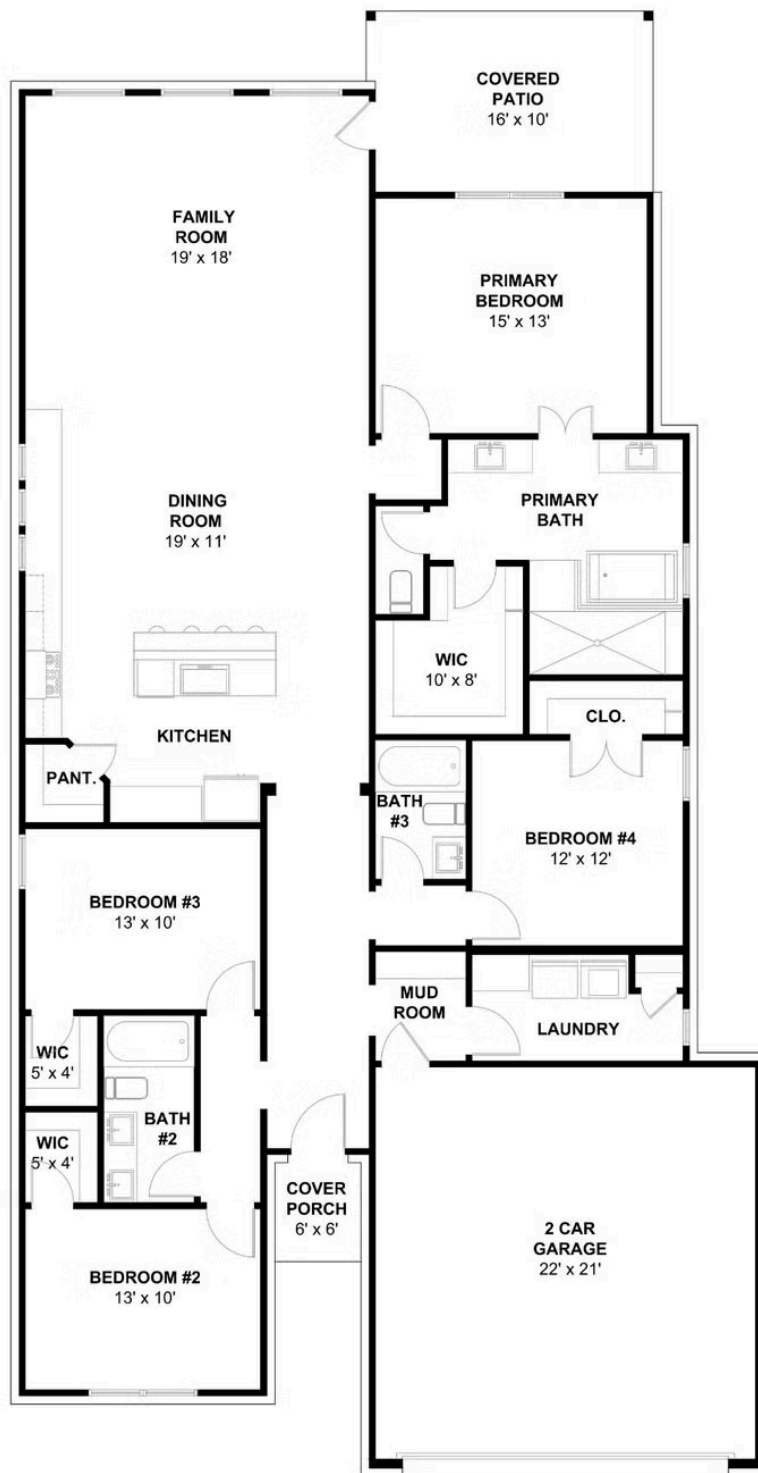
Plan: Plan 2246

 **4** Bedrooms

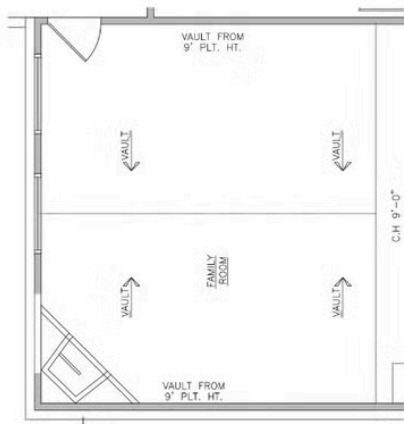
 **3.0** Bathrooms

 **2,246** Sq. Ft.

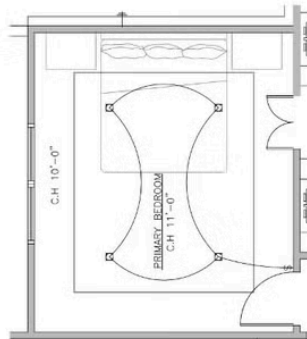
Elevation 2246 B



All square footage is approximate. Renderings are artist's conceptions and may vary slightly from the actual home. Homes may be built in reverse of plans shown, depending on site conditions. Minor architectural changes may be made occasionally at the option of the builder. Please contact your Sales Consultant for details.



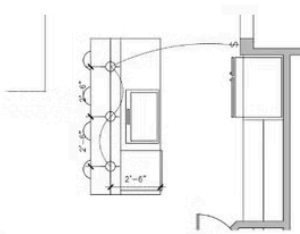
A FIREPLACE (OPTION)



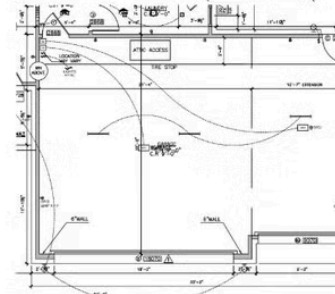
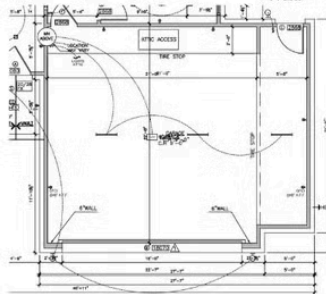
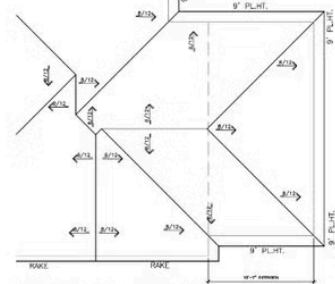
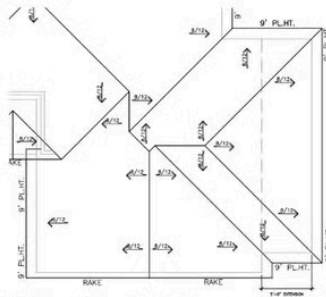
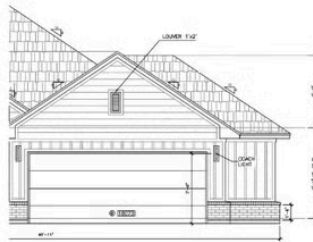
B PRIMARY BED (OPTION)



C LIVING ROOM (OPTION)



D KITCHEN (OPTION)



E 5' GARAGE EXTENSION (OPTION)

F 3 CAR GARAGE (OPTION)

Elevation 2246 B Options

All square footage is approximate. Renderings are artist's conceptions and may vary slightly from the actual home. Homes may be built in reverse of plans shown, depending on site conditions. Minor architectural changes may be made occasionally at the option of the builder. Please contact your Sales Consultant for details.