




## ***203 Silver Spike St. Sealy, TX 77474***

Versatile and modern, the 2131 offers a dedicated office for remote work, an open family area, and flexible lot compatibility. Features include 2.5 baths, a primary suite with en-suite, and options for a five-foot garage extension or third-car bay. Multiple elevation choices allow for a personalized look. Ideal for professionals or families who value adaptability and work-from-home functionality.

For more details or to express interest, contact us today!

**Home Priced At**  
**\$424,900**

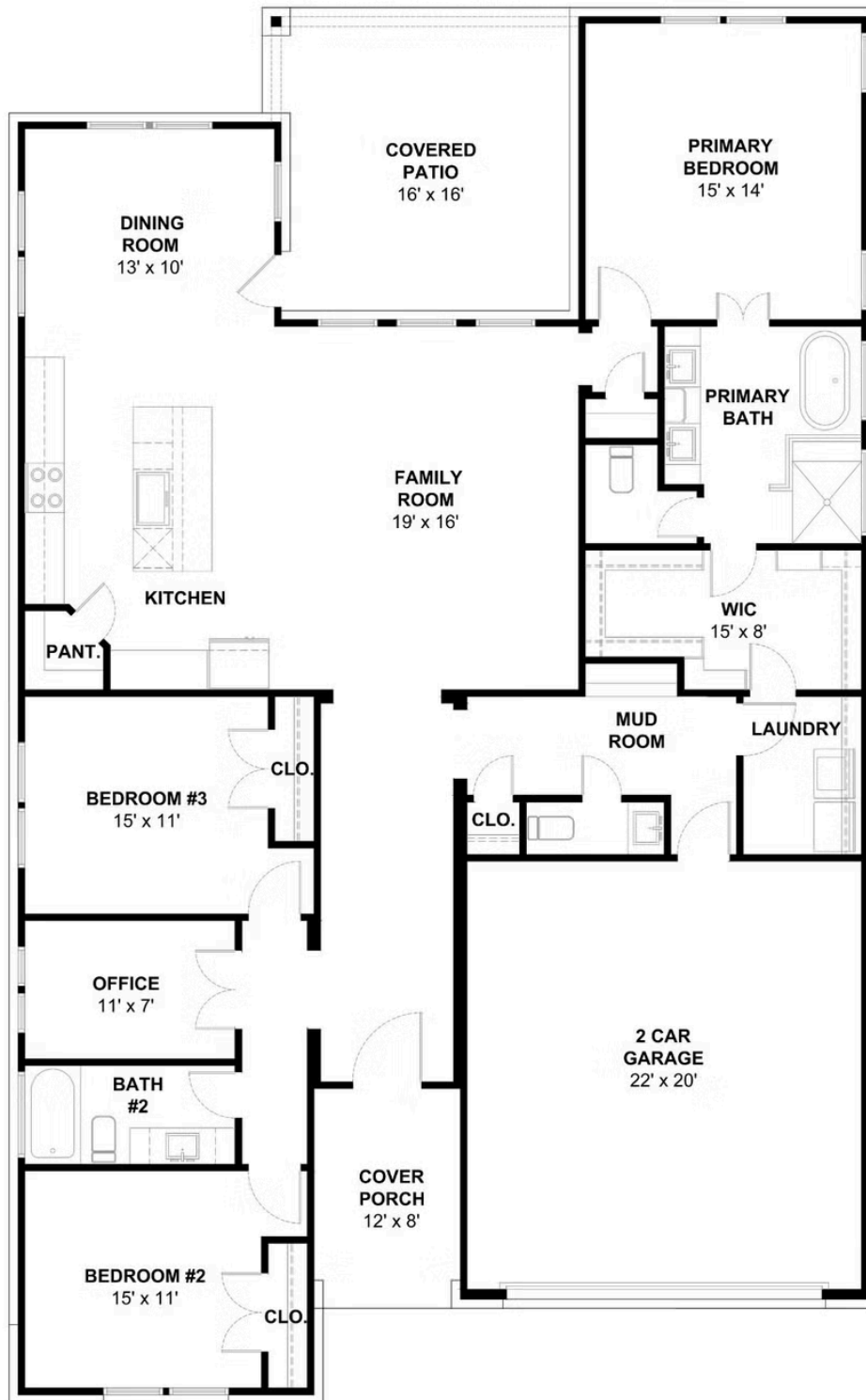
**Plan:** Plan 2131

 **3** Bedrooms

 **2.5** Bathrooms

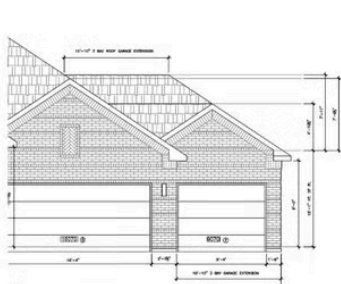
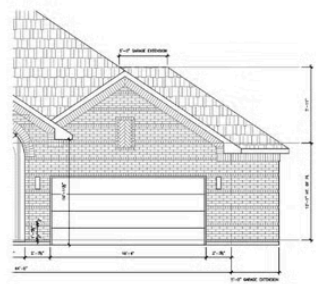
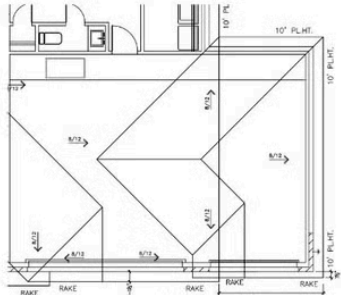
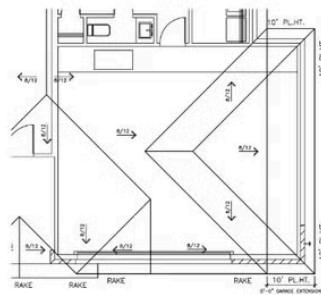
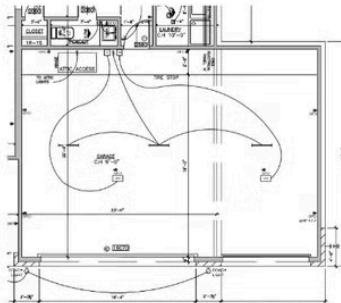
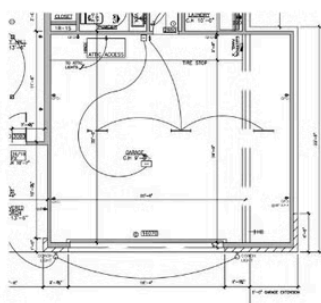
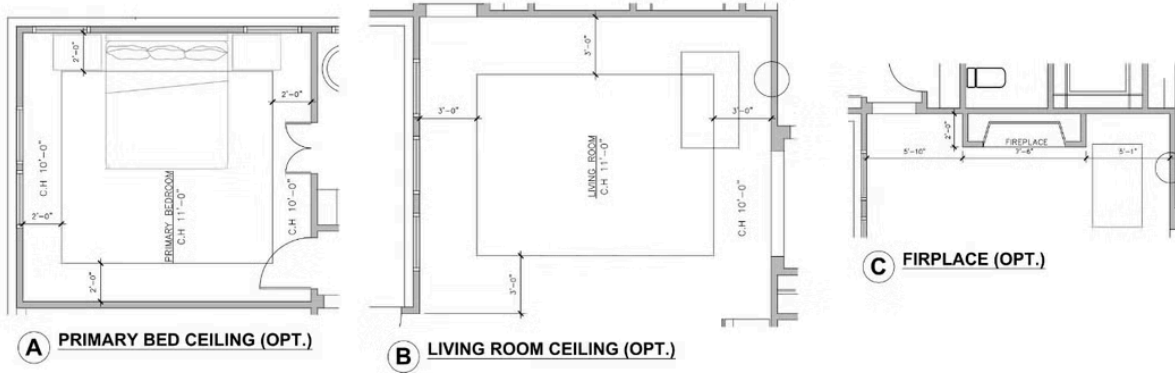
 **2,131** Sq. Ft.

## Elevation 2131 C



All square footage is approximate. Renderings are artist's conceptions and may vary slightly from the actual home. Homes may be built in reverse of plans shown, depending on site conditions. Minor architectural changes may be made occasionally at the option of the builder. Please contact your Sales Consultant for details.

## Elevation 2131 C Options



**D 5' GARAGE EXTENSION (OPT.)**

**E 3 CAR GARAGE (OPT.)**

All square footage is approximate. Renderings are artist's conceptions and may vary slightly from the actual home. Homes may be built in reverse of plans shown, depending on site conditions. Minor architectural changes may be made occasionally at the option of the builder. Please contact your Sales Consultant for details.