



Single Family


Plan 3000 Junction

Designed for family living and entertaining, this home offers multiple en-suite bedrooms, a private office, and walk-in closets. An open kitchen with island and covered patios create inviting spaces, while ample storage keeps everything organized. Junction offers a peaceful setting with modern conveniences just minutes away.

For more details or to express interest, contact us today!

**Priced From
\$714,900**

1 Elevation Available

 **4** Bedrooms

 **3.5** Bathrooms

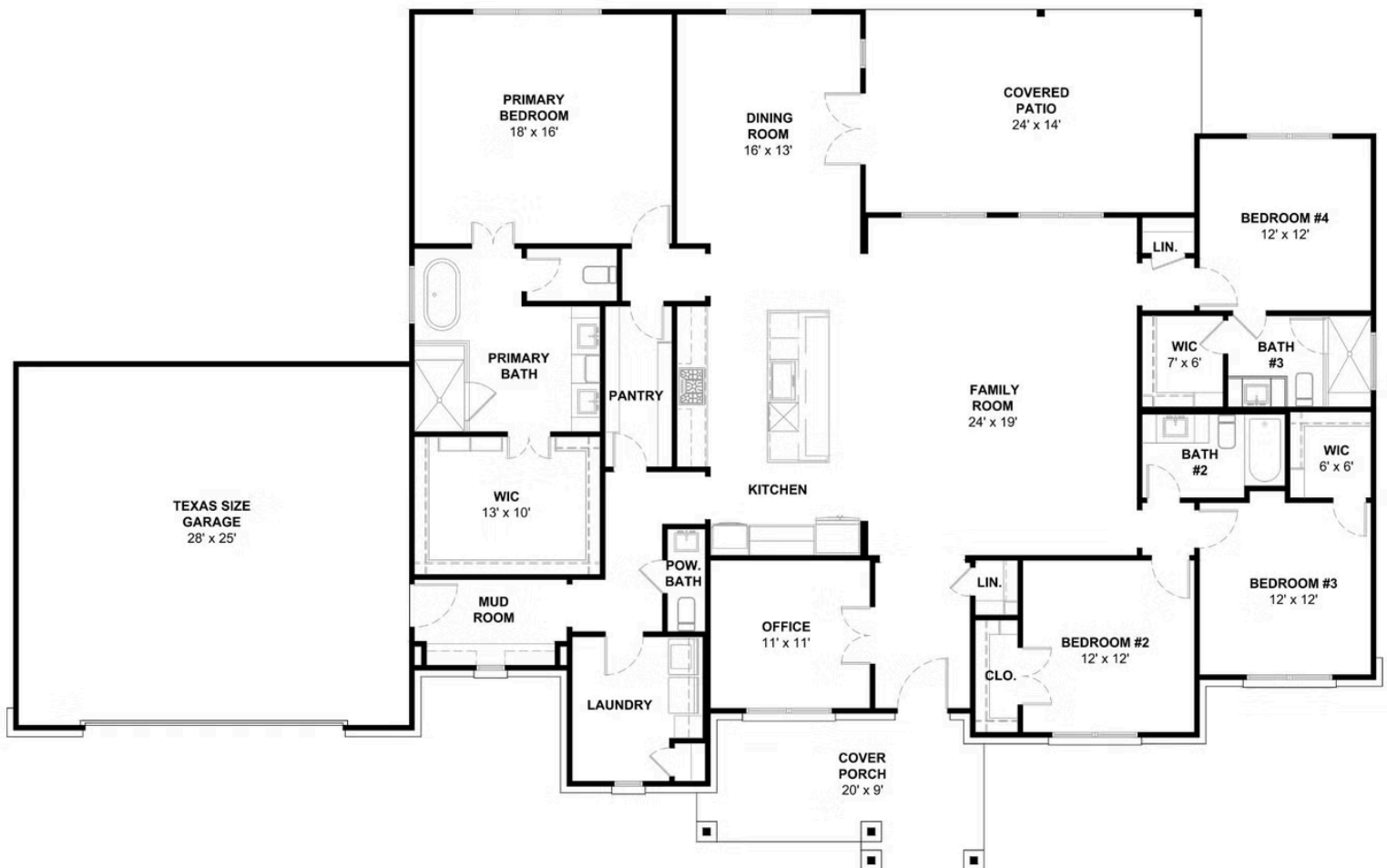
 **3,000+** Sq. Ft.

 **2** Car Garage



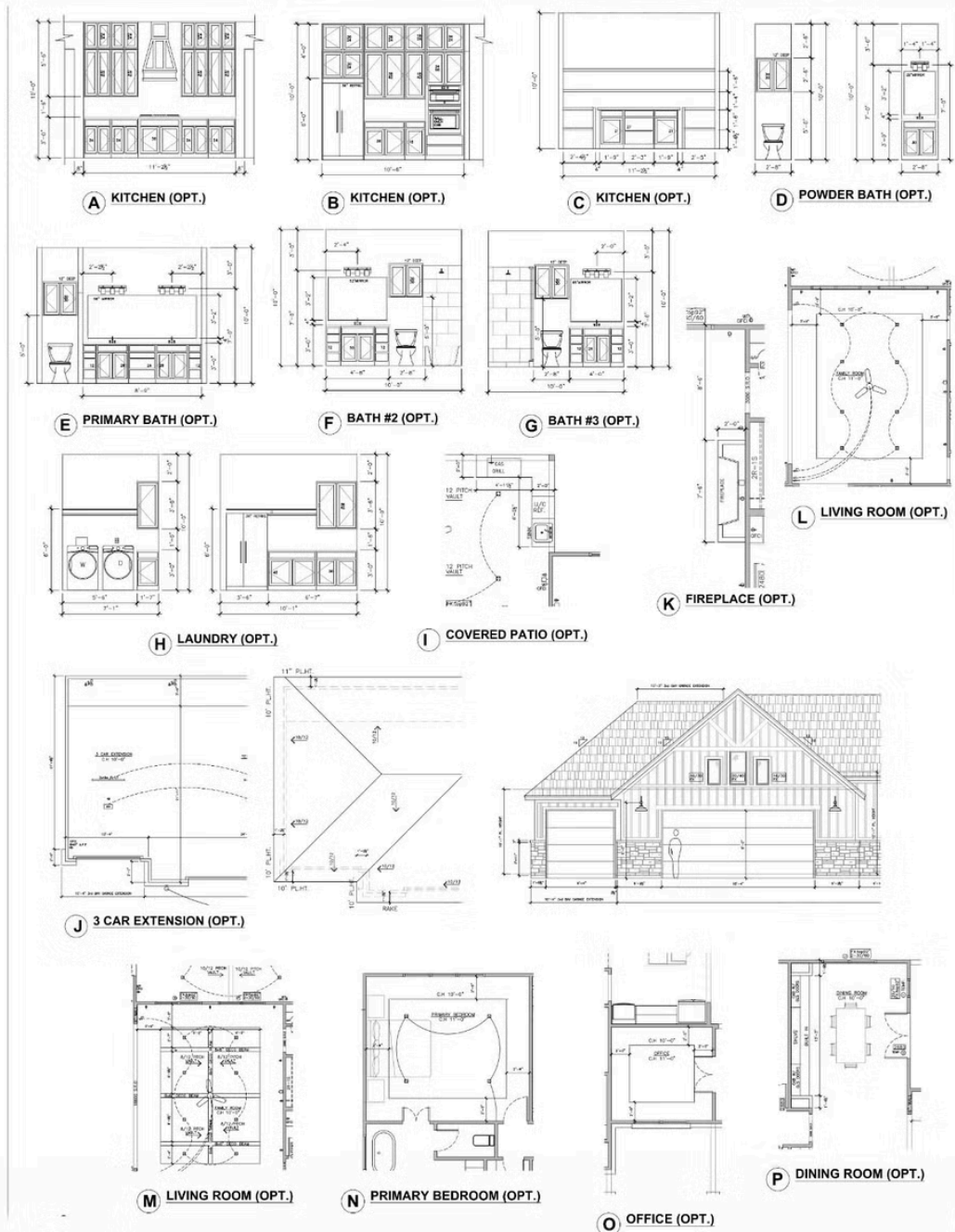
All square footage is approximate. Renderings are artist's conceptions and may vary slightly from the actual home. Homes may be built in reverse of plans shown, depending on site conditions. Minor architectural changes may be made occasionally at the option of the builder. Please contact your Sales Consultant for details.

Elevation B



All square footage is approximate. Renderings are artist's conceptions and may vary slightly from the actual home. Homes may be built in reverse of plans shown, depending on site conditions. Minor architectural changes may be made occasionally at the option of the builder. Please contact your Sales Consultant for details.

Elevation B Options



All square footage is approximate. Renderings are artist's conceptions and may vary slightly from the actual home. Homes may be built in reverse of plans shown, depending on site conditions. Minor architectural changes may be made occasionally at the option of the builder. Please contact your Sales Consultant for details.