

UNDER CONSTRUCTION




***8519 August Ln.
Needville, TX 77461***

This home features a Texas garage, walk-in pantry, utility suite, covered porch, and dining area. The open floor plan makes entertaining easy, while thoughtful design ensures everyday comfort. Living in Junction combines small-community charm with convenient access to shopping, dining, and schools.

For more details or to express interest, contact us today!

Call for Price

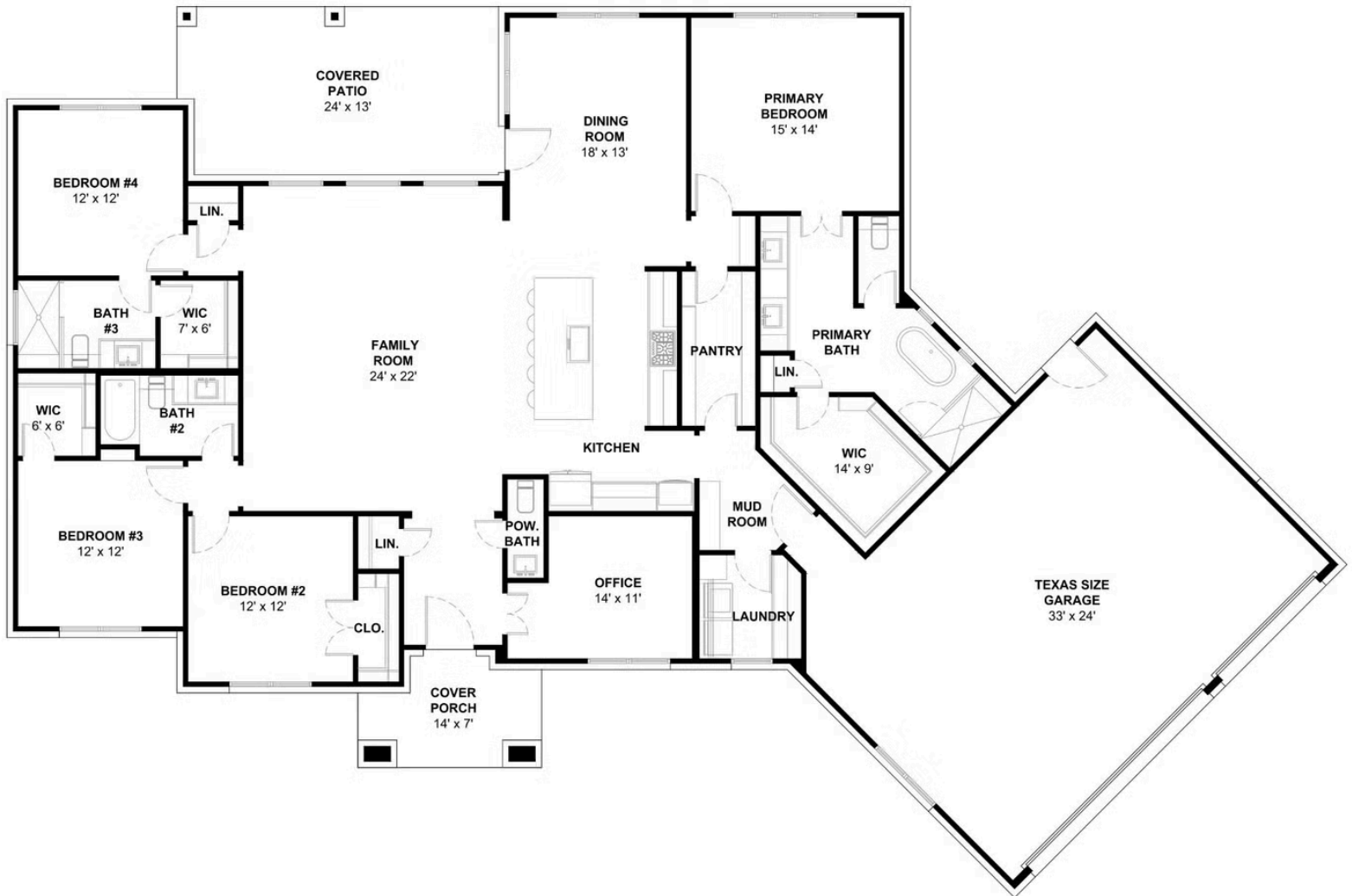
Plan: Plan 2763

 **4** Bedrooms

 **3.5** Bathrooms

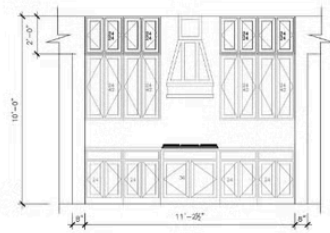
 **2,763** Sq. Ft.

Elevation B

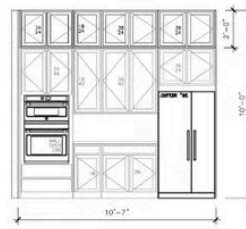


All square footage is approximate. Renderings are artist's conceptions and may vary slightly from the actual home. Homes may be built in reverse of plans shown, depending on site conditions. Minor architectural changes may be made occasionally at the option of the builder. Please contact your Sales Consultant for details.

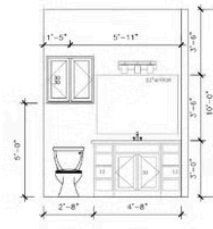
Elevation B Options



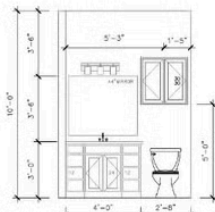
A KITCHEN (OPT.)



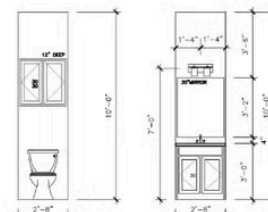
B KITCHEN (OPT.)



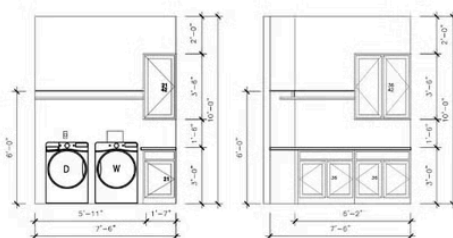
C BATH #2 (OPT.)



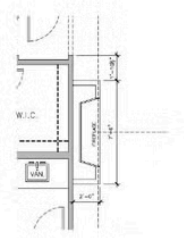
D BATH #3 (OPT.)



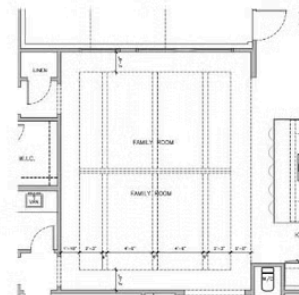
E POWDER (OPT.)



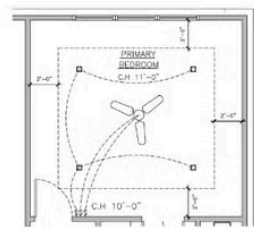
F LAUNDRY (OPT.)



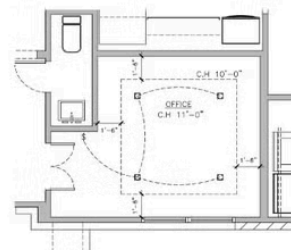
G FIRE PLACE (OPT.)



H LIVING ROOM BEAMS (OPT.)



I PRIMARY BEDROOM (OPT.)



J OFFICE (OPT.)

All square footage is approximate. Renderings are artist's conceptions and may vary slightly from the actual home. Homes may be built in reverse of plans shown, depending on site conditions. Minor architectural changes may be made occasionally at the option of the builder. Please contact your Sales Consultant for details.