


MODEL HOME

***12202 Demel Way
Needville, TX 77461***

A brand-new model home is coming soon to Junction in Needville, TX! Designed to showcase thoughtful layouts and modern finishes, this home offers comfortable living with plenty of space to enjoy both indoors and out. Located in a welcoming small-town setting, Junction provides convenient access to local schools, shops, and nearby amenities.

For more details or to schedule a visit, contact us today!

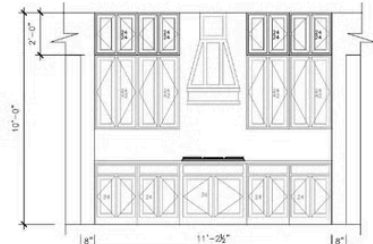
Call for Price**Plan:** Plan 2763 **4** Bedrooms **3.5** Bathrooms **2,763** Sq. Ft.

Elevation A

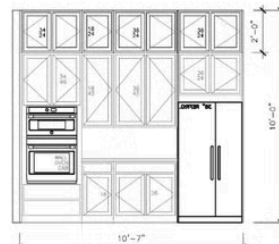


All square footage is approximate. Renderings are artist's conceptions and may vary slightly from the actual home. Homes may be built in reverse of plans shown, depending on site conditions. Minor architectural changes may be made occasionally at the option of the builder. Please contact your Sales Consultant for details.

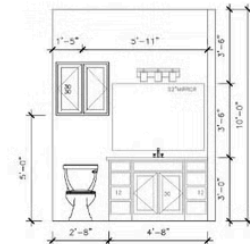
Elevation A Options



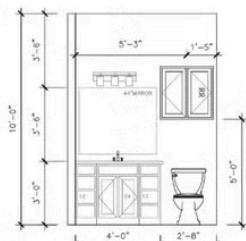
A KITCHEN (OPT.)



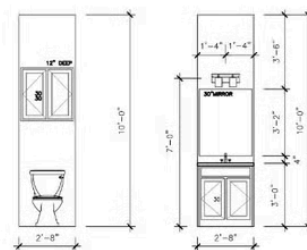
B KITCHEN (OPT.)



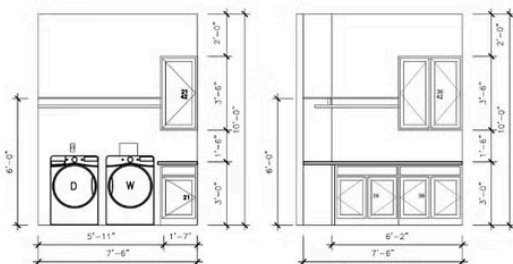
C BATH #2 (OPT.)



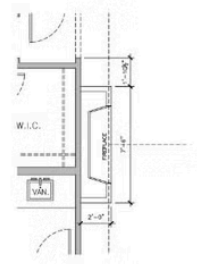
D BATH #3 (OPT.)



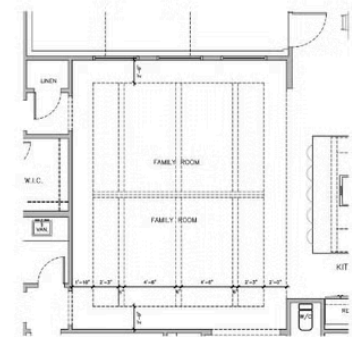
E POWDER (OPT.)



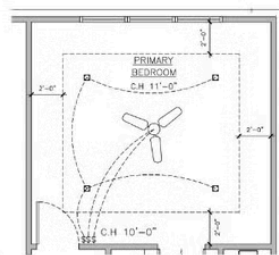
F LAUNDRY (OPT.)



G FIRE PLACE (OPT.)



H LIVING ROOM BEAMS (OPT.)



I PRIMARY BEDROOM (OPT.)

All square footage is approximate. Renderings are artist's conceptions and may vary slightly from the actual home. Homes may be built in reverse of plans shown, depending on site conditions. Minor architectural changes may be made occasionally at the option of the builder. Please contact your Sales Consultant for details.