



Single Family

Plan 2615


Junction

A spacious 4-bedroom plan with a Texas garage, walk-in pantry, covered porch, and formal dining. Perfectly designed to balance private and shared spaces, this home offers comfort and versatility. Life at Junction gives you a sense of community with easy access to local amenities and open outdoor spaces.

For more details or to express interest, contact us today!

Priced From
\$649,900

1 Elevation Available

 **4** Bedrooms

 **3.5** Bathrooms

 **2,615+** Sq. Ft.

 **2** Car Garage



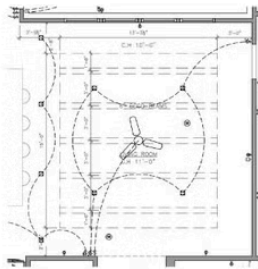
All square footage is approximate. Renderings are artist's conceptions and may vary slightly from the actual home. Homes may be built in reverse of plans shown, depending on site conditions. Minor architectural changes may be made occasionally at the option of the builder. Please contact your Sales Consultant for details.

Elevation C

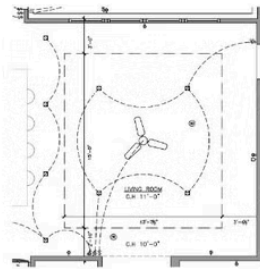


All square footage is approximate. Renderings are artist's conceptions and may vary slightly from the actual home. Homes may be built in reverse of plans shown, depending on site conditions. Minor architectural changes may be made occasionally at the option of the builder. Please contact your Sales Consultant for details.

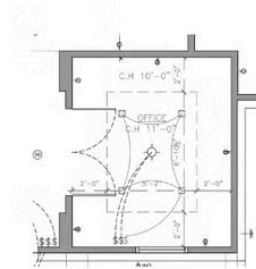
Elevation C Options



A LIVING ROOM (OPT.)



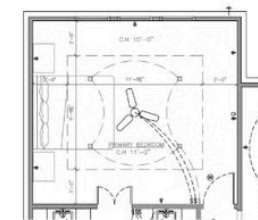
B LIVING ROOM (OPT.)



C OFFICE (OPT.)



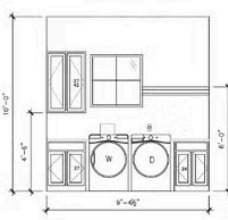
D FIREPLACE (OPT.)



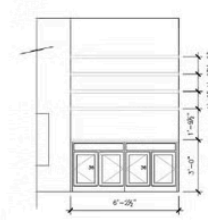
E PRIMARY BEDROOM (OPT.)



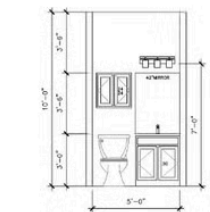
F BUILT-IN CABINET WINE BAR



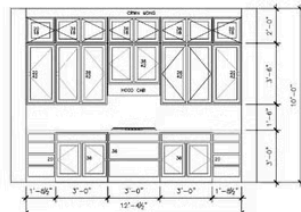
G LAUNDRY (OPT.)



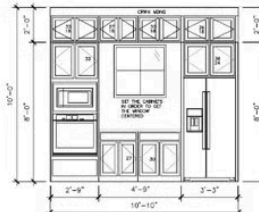
H FIREPLACE BUILT-IN (OPT.)



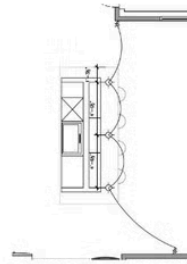
I POWDER BATH (OPT.)



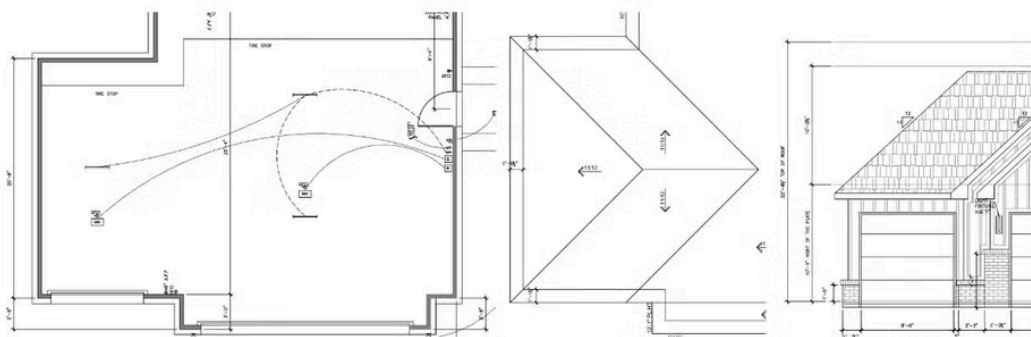
J KITCHEN (OPT.)



K KITCHEN (OPT.)



L KITCHEN PENDANTS (OPT.)



M 3 CAR GARAGE (OPT.)

All square footage is approximate. Renderings are artist's conceptions and may vary slightly from the actual home. Homes may be built in reverse of plans shown, depending on site conditions. Minor architectural changes may be made occasionally at the option of the builder. Please contact your Sales Consultant for details.