

UNDER CONSTRUCTION




**8719 August Ln.
Needville, TX 77461**

Featuring a Texas-style garage, walk-in pantry, and covered porch, this home blends style and function. A dining room and utility suite make daily life simple, while the thoughtfully designed layout provides comfort throughout. Living in Junction means enjoying a friendly neighborhood with convenient access to schools, shops, and dining.

For more details or to express interest, contact us today!

Call for Price

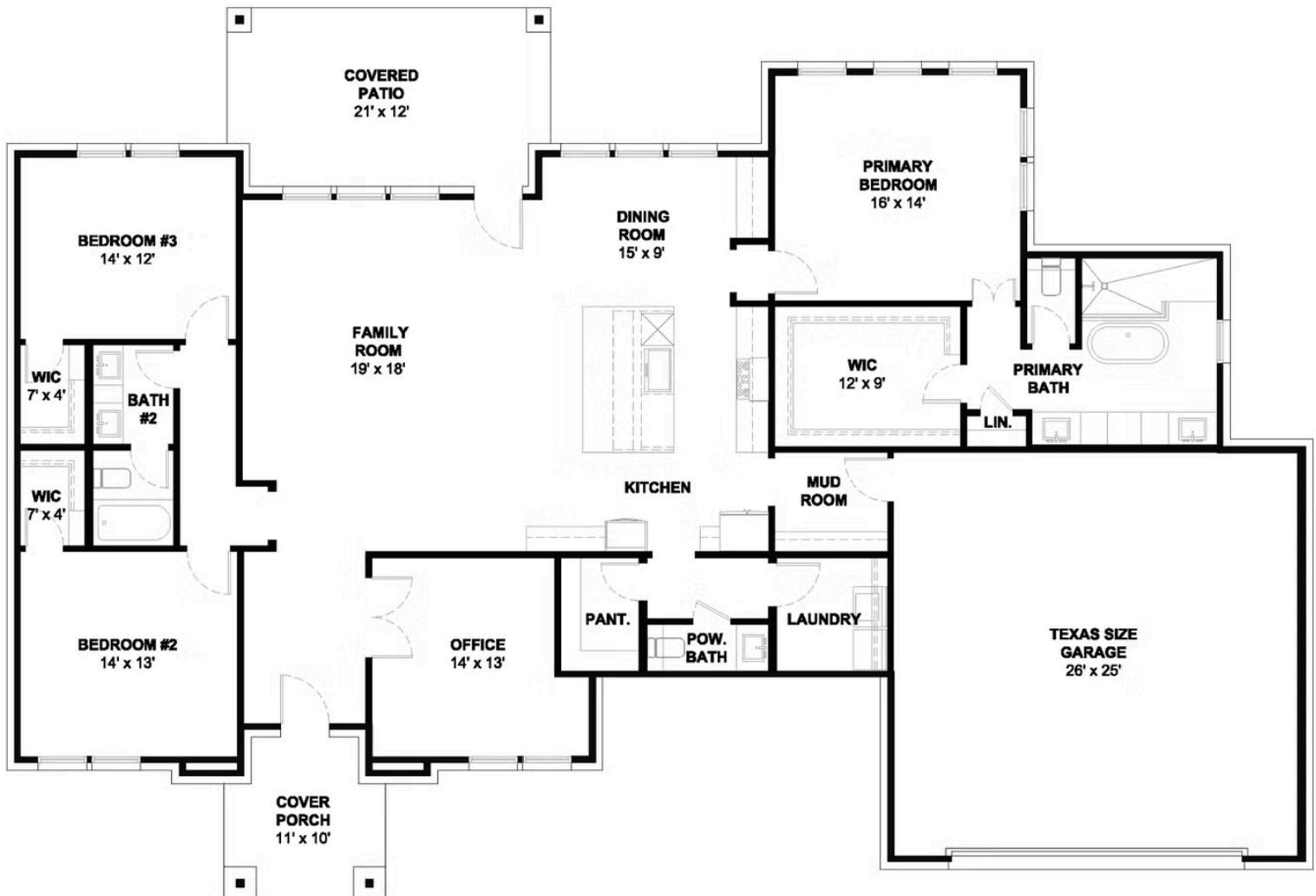
Plan: Plan 2391

 **3** Bedrooms

 **2.0** Bathrooms

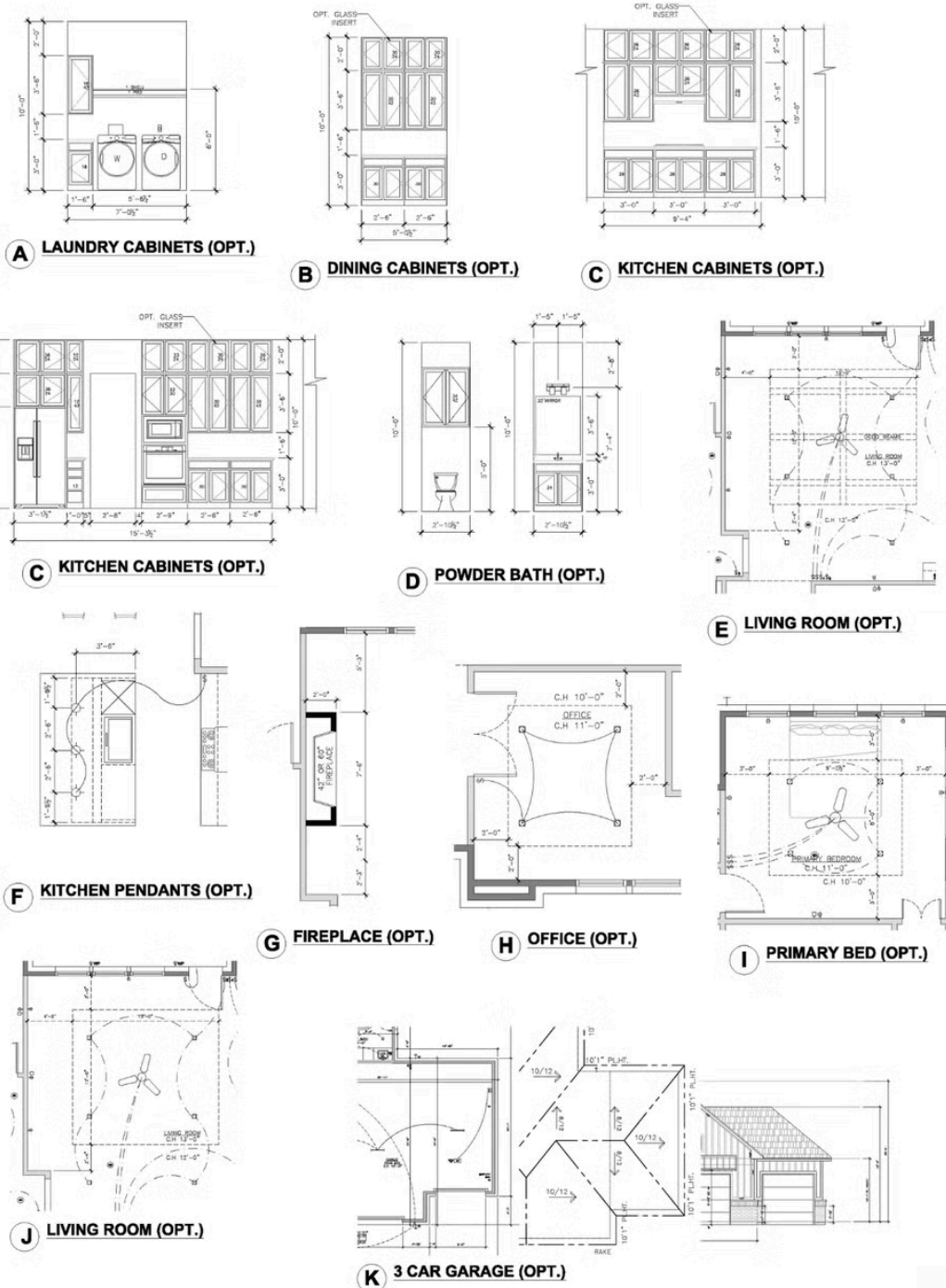
 **2,391** Sq. Ft.

Elevation 2391 B



All square footage is approximate. Renderings are artist's conceptions and may vary slightly from the actual home. Homes may be built in reverse of plans shown, depending on site conditions. Minor architectural changes may be made occasionally at the option of the builder. Please contact your Sales Consultant for details.

Option 2391 B



All square footage is approximate. Renderings are artist's conceptions and may vary slightly from the actual home. Homes may be built in reverse of plans shown, depending on site conditions. Minor architectural changes may be made occasionally at the option of the builder. Please contact your Sales Consultant for details.